

Water Quality Monitoring Report 2010

July 29, 2011

Metro Vancouver Regional Parks

Prepared by: Stephanie Harrison, P. Eng.



**metro
vancouver**

This page intentionally left blank

CONTENTS

1.0 INTRODUCTION	1
2.0 DRINKING WATER SYSTEMS AND SOURCE OF SUPPLY	2
2.1 Municipal Systems.....	2
2.2 Regional Parks Systems.....	3
2.2.1 Aldergrove Lake, Potable Water System.....	3
2.2.2 Belcarra Picnic Area, Water System.....	3
2.2.3 Belcarra White Pine, Water System.....	3
2.2.4 Belcarra White Pine, Lake Water System.....	3
2.2.5 Lynn Headwaters, Water System.....	4
2.2.6 Campbell Valley Equestrian Center, Water System.....	4
3.0 WATER SAMPLING AND TESTING PROGRAM	6
4.0 DRINKING WATER PROTECTION ACT	9
4.1 Results of Microbiological Analysis	9
4.2 Free Chlorine Residual Analysis.....	9
4.3 Results of Turbidity Analysis.....	9
4.4 Total Water Quality Analysis.....	10
4.5 Systems Classification.....	10
4.6 Emergency Response Plan.....	11
5.0 CONCLUSIONS	16
6.0 RECOMMENDATIONS	16

TABLES

2.1 Metro Vancouver Regional Parks with Municipal Supplied Water	2
3.1 Metro Vancouver Regional Parks Water Sampling Program	6
3.2 Metro Vancouver Regional Parks Sampling Sites.....	8
4.1 Microbiological and Physical Analysis.....	12
4.2 Analysis of Chlorine Levels and Microbiology	13
4.3 Analysis of Turbidity and Microbiology	14
4.4 Total Water Quality Analysis.....	15

FIGURES

1 Metro Vancouver Greenspace.....	5
-----------------------------------	---

APPENDICES

APPENDIX A FIELD SAMPLING PROCEDURES	
APPENDIX B METRO VANCOUVER POTABLE SUMMARY REPORT FOR PARKS 2010	
APPENDIX C HEALTHLINK BC – DRINKING WATER AND THOSE WITH WEAKENED IMMUNE SYSTEMS	
APPENDIX D FRASER HEALTH – HEALTH INFORMATION ON ARSENIC OCTOBER 2009	

This page intentionally left blank

1.0 INTRODUCTION

The current legislation for drinking water safety in BC includes:

- Drinking Water Protection Act (DWPA)
- Drinking Water Protection Regulation (DWPR)
- Water Act
- Guidelines for Canadian Drinking Water Quality (GCDWQ)
- Ground Water Protection Regulation (GWPR)

The above legislation outlines responsibilities of the water system owner in the areas of source protection, construction and plan approvals, treatment, monitoring, emergency response planning, and reporting requirements.

As part of the DWPA (Section 15 (b)), an annual Water Quality Monitoring report is required. This report is provided in fulfillment of this requirement.

Metro Vancouver Regional Parks operates 22 Regional Parks, 4 Regional Reserves, 2 Ecological Conservancy Areas and 5 Regional Greenways. Most of these are supplied with water from the municipalities in which they are situated. This report deals only with the 5 publicly used water systems within 3 regional parks that have permits issued from the local Health Authority to operate a public water system.

2.0 DRINKING WATER SYSTEMS AND SOURCE OF SUPPLY

2.1 Municipal Systems

The majority of Metro Vancouver Regional Parks are supplied with water from the Municipalities in which they are situated. The individual Municipal reports should be referenced for monitoring results with respect to these sites. Table 2.1 lists these parks and the Municipality providing water to the site.

Table 2.1: Metro Vancouver Regional Parks with Municipal Supplied Water

Regional Park	Municipality
Barnston Island	No public water facilities
Boundary Bay	Corporation of Delta
Brae Island	Township of Langley
Burnaby Lake	City of Burnaby
Campbell Valley	Township of Langley
Capilano River	Metro Vancouver, District of North Vancouver
Colony Farm	City of Coquitlam
Crippen	Bowen Island
Deas Island	Corporation of Delta
Derby Reach	Township of Langley
Glen Valley	No public water facilities
Grant Narrows	No public water facilities
Iona Beach	City of Vancouver
Kanaka Creek	District of Maple Ridge
Matsqui Trail	City of Abbotsford
Minnekhada	City of Coquitlam
Pacific Spirit	University Endowment Lands
Surrey Bend	No public water facilities
Thwaytes Landing	No public water facilities
Tynehead	City of Surrey
Regional Reserve	Municipality
Blaney Bog	No public water facilities
Fraser Islands	No public water facilities
Sumas Mountain	No public water facilities
Widgeon Marsh	No public water facilities
Ecological Conservancy Areas	Municipality
Burns Bog	No public water facilities
Codd Wetland	No public water facilities
Regional Greenway	Municipality
Brunette Fraser	City of New Westminister
Delta South Surrey	No public water facilities
North Alouette	No public water facilities
Pitt River	No public water facilities
Seymour River	No public water facilities

2.2 Regional Parks Systems

In 2010, the Metro Vancouver Regional Parks held permits to operate six (6) public water systems throughout the Parks system. These water systems include:

- 1) Aldergrove Lake potable water system
- 2) Belcarra Picnic Area water system
- 3) Belcarra White Pine water system
- 4) Belcarra White Pine Lake water system
- 5) Lynn Headwaters water system
- 6) Campbell Valley Equestrian Center water system.

The locations of Metro Vancouver Regional Parks are shown in Figure 1 Metro Vancouver Greenspace.

The water systems are treated and disinfected by a variety of methods. The following is a brief description of each water system.

2.2.1 Aldergrove Lake Potable Water System

The water is supplied to this system by one well of 102 feet depth. The well water is pumped through an arsenic reduction system to a 90 cubic meter storage reservoir. From this point the water is fed by gravity to a building where it is treated with chlorine. The chlorine is dosed by a metering pump into a pressurized mixing tank where the water is continuously circulated. It is then distributed by approximately 650 meters of service line to the maintenance building, two rental houses, standpipes, yard hydrant, concession and washroom building.

2.2.2 Belcarra Picnic Area Water System

The water is supplied by two deep wells, one of 104 feet depth and one of 385 feet depth. Both wells are pumped to a small reservoir. From this point, water is pumped up hill to a 273 cubic meter storage reservoir. En-route, it is dosed by chlorine. The chlorinator functions only when the booster pump operates. The water is stored until ready to use. On the way back to the distribution system, the water is again dosed with a chlorine metering system. The water is then distributed through approximately 1000 meters of waterline to various tap stands, maintenance building, washroom building and caretaker house.

2.2.3 Belcarra White Pine Water System

The water is supplied by one deep well of 90 feet depth. The well is pumped to a 115 cubic meter storage reservoir. From this point, the water is fed by gravity to both Camp Sasamat and to a building where it is treated with chlorine injected into a pressurized mixing tank. The chlorine is dosed by metering pump and then continuously circulated. It is then distributed by approximately 800 meters of service line to two washroom buildings, standpipes and yard hydrants for park use. Camp Sasamat is not included in this monitoring report because the camp receives raw water from the Park and maintains a separate chlorination system.

2.2.4 Belcarra White Pine Lake Water System

In 2006, a lake water system was installed to supplement the existing ground water system due to high peak period demand of the lake. The lake water system is used only to flush toilets at the two washroom buildings which have had the plumbing modified to accommodate this. Never the less, the water is treated to drinking water standards. The treatment system includes sand filtration followed by filtration through both 5 micron and 1 micron filters and disinfection provided by ultraviolet lamps. An operating permit was obtained for this system, and the conditions of the permit indicate that no sampling is required. The system includes a 150 meter lake intake pipe, a pumphouse housing the pumps and treatment system and 220 meters of 75mm diameter piping connecting the 2 washroom buildings.

In October 2010, Metro Vancouver made an application to the Fraser Health Authority (FHA) to amend the operating permit for this system so that treatment could be reduced to include sand filtration only. No decision was made by FHA to amend the permit in 2010.

2.2.5 Lynn Headwaters Water System

The water is supplied by a well of 165 feet depth. Water is pumped to the BC Mills House where it is filtered and treated by UV disinfection. Water is then distributed through approximately 115 meters of service line to the maintenance building, BC Mills house, caretaker's house and a drinking water fountain.

2.2.6 Campbell Valley Equestrian Center Water System

The water is supplied by one well of unknown depth. The water is pumped to several pressure tanks of 0.6 cubic meter storage and then distributed through approximately 800 meters of service line to several hosebibs and taps. The water is not treated. Permit requirements for this water system indicate that no water be provided for human consumption. On July 18, 2008 this site was posted with signs at all tap outlets indicating as such. As per permit requirements, the water on this site is not tested for chemical, physical or biological quality.

METRO VANCOUVER GREENSPACE

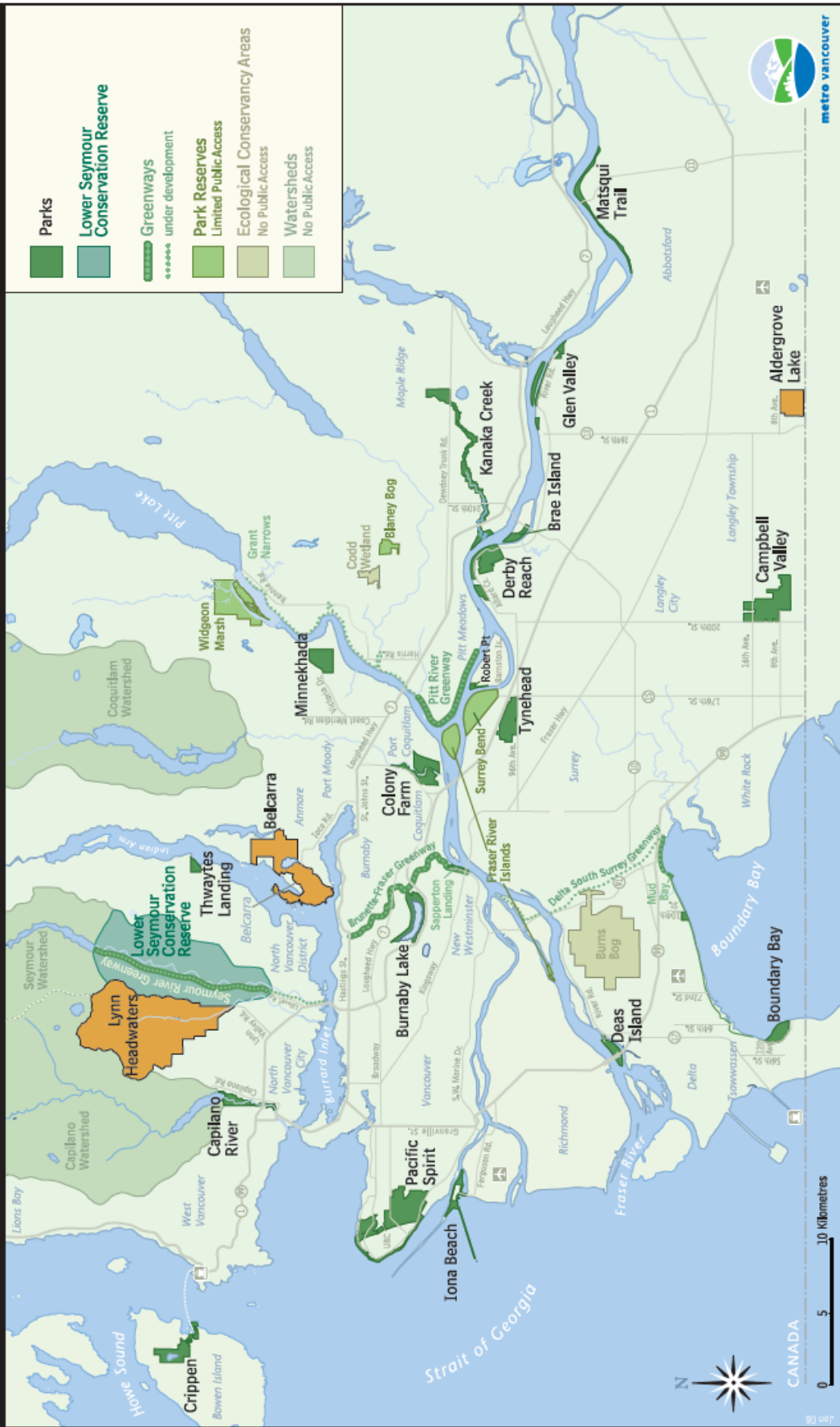


Figure 1

■ Metro Vancouver Regional Parks covered in this report

3.0 WATER SAMPLING AND TESTING PROGRAM

Table 3.1 outlines the water sampling and testing program undertaken by the Metro Vancouver Regional Parks.

Table 3.1: Metro Vancouver Regional Parks Water Sampling Program

Water Type	Parameter	Frequency
Untreated Source water	Total and fecal coliforms (<i>Escherichia coli</i>)	Weekly
	Turbidity and temperature	Weekly
	Alkalinity, aluminum, arsenic, barium, boron, cadmium, calcium, total organic carbon, chloride, chromium, cobalt, true color, apparent color, conductivity, copper, fluoride, hardness, iron, lead, magnesium, manganese, mercury, molybdenum, nickel, ammonia, Nitrate, nitrite, nitrogen, pH, potassium, total dissolved residue, selenium, silver, sodium, sulphate, turbidity, zinc	Yearly
Treated water at source	Free chlorine	Weekly
Distribution system sites	Total and fecal coliforms (<i>Escherichia coli</i>)	Weekly per site
	Turbidity and temperature	Weekly per site
	Free chlorine	Weekly per site

Water sampling and testing as described in Table 3.1 meets the frequency and standards requirements of Schedules A and B of the Drinking Water Protection Regulation.

Metro Vancouver Operations and Maintenance, Quality Control Division collects and analyzes the samples. The centralization of this function provides consistency of reporting and collection procedures.

Metro Vancouver Regional Parks does not have dedicated sampling stations. Sample lines are not continuously running. The sample sites include bathroom taps, outside hose bibs, pressure taps in chlorination facilities, gallery taps and kitchen taps. If the sample site is a bathroom tap, outside hose bib, gallery tap or a kitchen tap, the tap must be sterilized prior to sample collection. A complete list of sampling procedures is located in Appendix A.

The sampling sites were located by reviewing each of the water systems and establishing locations at the endpoint of each of the waterline runs and several other strategic locations throughout the system. The Fraser Health Authority requested changing the sites from the bathroom taps to gallery taps, which was done in June 2007. Table 3.2 identifies the 18 sample sites tested for biological and physical parameters, as well as the 6 locations tested for physical and chemical parameters.

The Metro Vancouver Regional Parks sampling program exceeded the requirements as outlined in Schedule B of the Regulation for biological and physical parameters and included sampling 14 sites on a year round basis and 4 sites over the summer period. Over 790 samples were collected over the course of the year and they were analyzed to ensure microbiological and physical conformance.

Samples were taken on a weekly basis (on average) at 17 of the 18 sites. One site had samples taken on a monthly basis (on average) during the summer months. For the Parks system, approximately 670 chlorine analyses were completed, and approximately 630 bacteriological and turbidity samples taken and analyzed. Sample results are sent simultaneously to Parks personnel and the DWO.

Metro Vancouver Regional Parks sampling and testing program includes a total water quality analysis for physical and chemical conformance to the Guidelines for Canadian Drinking Water Quality (GCDWQ). One sample is taken each year in late spring/early summer at a total of 7 locations. Additionally, three locations in Aldergrove Lake are tested 6 months later for conformance to the GCDWQ for arsenic only, as a condition of the permit issued by Fraser Health.

Table 3.2: Metro Vancouver Regional Parks Sampling Sites

Park Name	Sample ID	Sample Name	Location	Sample Sites	Parameters Tested (Biological/Physical & Chemical/Chlorine only)	Sample Period	Average Sample Rate	Number of Samples
Aldergrove Lake	PKS-P-ALD-03	ALD Pot, CL shed, recirc. tap	Chlorination Shed	Mixing tank tap	Chlorine only	Jan - Dec	Weekly	52
Aldergrove Lake	PKS-P-ALD-04	ALD Pot, CL shed, RAW well head tap	Chlorination Shed	Source-wellhead tap	Biological & Physical	Jan - Dec	Weekly	52
Aldergrove Lake	PKS-P-ALD-09	ALD Pot, Field by rental, standpipe	Field by rental	standpipe	Biological & Physical	June - Sep	Weekly	15
Aldergrove Lake	PKS-P-ALD-12	ALD Pot, Beach tables, standpipe	Beach by picnic tables	Standpipe	Biological & Physical	Jan - Dec	Weekly	52
Aldergrove Lake	PKS-P-ALD-16	ALD Pot, Beach, fountain	Beach by washrooms	fountain	Biological & Physical	May - Sep	4 times a year	4
Aldergrove Lake	PKS-P-ALD-19	ALD Pot, Beach WR, tap in hall	Washroom at the Beach	tap in hall	Biological & Physical	Jan - Dec	Weekly	52
Aldergrove Lake	PKS-P-ALD-21	ALD Pot, Beach East, standpipe	East side of beach	Standpipe	Biological & Physical	Jan - Dec	Weekly	52
Belcarra - Picnic Area	PKS-P-BEL-10	BEL PC, Caretaker, hose bib	Caretaker's residence	Outdoor tap	Biological & Physical	Jan - Dec	Weekly	52
Belcarra - Picnic Area	PKS-P-BEL-16	BEL PC, CL Shed, tap on 150mm	Chlorination Shed	tap on 150mm waterline	Biological & Physical	Jan - Dec	Weekly	52
Belcarra - Picnic Area	PKS-P-BEL-23	BEL PC, Interpretive center sink tap	Concession/Washroom on Beach	Interpreter's Office Sink	Biological & Physical	Jan - Dec	Weekly	52
Belcarra - Picnic Area	PKS-P-BEL-24	BEL PC, Service bldg, first aid room tap	Service Building	First Aid room tap	Chlorine only	Jun - Dec	Weekly	52
Belcarra - White Pine	PKS-P-BEL-53	BEL WP, Bldg #1, first aid room tap	#1 Washroom on Beach	First Aid room tap	Biological & Physical	Jan - Dec	Weekly	52
Belcarra - White Pine	PKS-P-BEL-60	BEL WP, bldg #2, gallery tap	#2 Washroom on Beach	gallery tap	Biological & Physical	May - Sep	Weekly	22
Belcarra - White Pine	PKS-P-BEL-66	BEL WP, CL shed, RAW tap on 100mm	Chlorination Shed	Tap on 100mm waterline	Biological & Physical	Jan - Dec	Weekly	52
Belcarra - White Pine	PKS-P-BEL-67	BEL WP, CL shed, meter tap	Chlorination Shed	tap by meter	Chlorine only	Jan - Dec	Weekly	52
Belcarra - White Pine	PKS-P-BEL-71	BEL WP, Maint. bldg, washroom tap	Maintenance building	washroom tap	Biological & Physical	Jan - Dec	Weekly	52
Lynn Headwaters	PKS-P-LYN-01	LYN, picnic, hose bib	Trail at BC Mill House	Drinking fountain	Biological & Physical	May - Oct	4 times a year	4
Lynn Headwaters	PKS-P-LYN-02	LYN, picnic, BC Mills tap	BC Mills House	laundry sink	Biological & Physical	Jan - Dec	Weekly	52
Estimated Total Number of Samples per year								
Aldergrove Lake	PKS-P-ALD-04	ALD Pot, CL shed, RAW well head tap	Chlorination Shed	Source-wellhead tap	Physical & Chemical	April 30, Oct 30	Twice	2
Aldergrove Lake	PKS-P-ALD-05	ALD Pot, Main bldg, kitchen tap	Service Building	Kitchen tap	Physical & Chemical	April 30, Oct 30	Twice	2
Aldergrove Lake	PKS-P-ALD-30	ALD Pot, CL shed, RAW after arsenic removal	Chlorination Shed	tap after arsenic removal system	Physical & Chemical	April 30, Oct 30	Twice	2
Belcarra - Picnic Area	PKS-P-BEL-21	BEL PC, CL shed, RAW well #1 Service Yard	Chlorination Shed	Tap in chlorination shed	Physical & Chemical	Once	Once	1
Belcarra - Picnic Area	PKS-P-BEL-22	BEL PC, CL shed, RAW well #2 playground	Chlorination Shed	Tap in chlorination shed	Physical & Chemical	Once	Once	1
Belcarra - White Pine	PKS-P-BEL-70	BEL Pot, Well #1 Raw Water Tap	Well Head valve chamber	Tap on well supply line	Physical & Chemical	Once	Once	1
Lynn Headwaters	PKS-P-LYN-03	LYN, BC Mills, press tank tap	BC Mills House	Pressure tank tap	Physical & Chemical	Once	Once	1
Estimated Total Number of Samples per year								
773								

4.0 DRINKING WATER PROTECTION REGULATION (DWPR)

The DWPR (Schedule A) establishes the following microbiological standards for which samples must be analyzed and be in compliance:

Fecal coliform bacteria	No detectable fecal coliform bacteria per 100ml
Escherichia coli	No detectable Escherichia coli (E. coli) per 100ml
Total coliform bacteria	
a) 1 sample in a 30 day period	No detectable total coliform bacteria per 100ml
b) More than 1 sample in a 30 day period	At least 90% of samples have no detectable total coliform bacteria per 100ml and no sample has more than 10 total coliform bacteria per 100ml

In addition to the requirements of the DWPR, Metro Vancouver Regional Parks tests for some of the parameters of the Guidelines for Canadian Drinking Water Quality (GCDWQ) set out by Health Canada. Other quality requirements for which the Parks strives include free chlorine residual above 0.2 mg/L, and delivery of non turbid water (ie. less than 1 NTU). Table 4.1 describes average results for each of Parks water systems and location of each sample site as well as the range of test results at each sample site for the microbiological parameters of Schedule A and for the Parks objectives. A complete listing of each water sample result at each site can be found in Appendix B.

4.1 Results of Microbiological Analysis

The analysis performed on Parks water samples showed that the drinking water supplied throughout the Parks systems was for the most part in compliance with the standards of the DWPR. For the months of May and August 2010, Aldergrove Lake was not in compliance for total coliform bacteria. In May and August, 88% and 82.1% of samples had no detectable total coliform bacteria per 100ml respectively. This does not comply with the standard that at least 90% of samples must have no detectable total coliform bacteria. No sample had more than 10 total coliform bacteria per 100ml.

4.2 Free Chlorine Residual Analysis

In general, the free chlorine residual objective of 0.2 mg/L was met for the drinking water supplied to the Picnic Area in Belcarra. At Aldergrove Lake, chlorine residuals were quite low at the beginning of 2010, and the chlorine dosing unit at Aldergrove Lake was suspected. A boil water advisory was placed on the system in March 2010. The chlorine pump was replaced in March 2010. Chlorine residual did not climb over 0.2ppm until June 2010. For the rest of the year, chlorine readings were quite erratic, with highs of 8.2 one week and 0 the next week. Residual were also low on the water system at Belcarra White Pine in March, April and May, but at no time was there any coliforms on the treated water.

Table 4.2 compiles the percentage of samples with less than 0.2 mg/L residual free chlorine. The results indicate that there are several locations with high incidences of chlorine residuals below 0.2 mg/L. There were positive results for total coliform bacteria during the months of May, August and September on the Aldergrove Lake water system. It is important to note that no samples had a positive result for Escherichia coli.

4.3 Results of Turbidity Analysis

The GCDWQ specifies a guideline of 0.1 Nephelometric Turbidity Units (NTU) for treated water. However, this is only a guideline and past practice indicates that a turbidity of less than 1 NTU is more achievable while still ensuring public safety. The Metro Vancouver Regional Parks monitors for turbidity at most sampling locations. Table 4.3 compiles the results for 2010.

The results indicate that of the samples tested for turbidity approximately 98% was less than or equal to 1 NTU, 1% was less than or equal to 2 NTU and 1% was greater than 2 NTU. It is important to note that the incidences of high turbidity occurred in Aldergrove Lake, a system with a well water supply, and at no time did the turbidity occurrences coincide with a positive coliform test. One high turbidity reading occurred at the source water in Aldergrove Lake with a value of 27 NTU, but this high value was not repeated and nor were there any values as high at the sampling endpoints. One other sampling site at Aldergrove Lake, ALD 09, experienced high turbidity readings for approximately 16% of total samples. The sampling point on this line is at the end of a 20mm service line, approximately 500 meters long. We will continue to perform an annual flushing program to remove as much sediment from the system as possible.

4.4 Total Water Quality Analysis

Along with weekly tests, Metro Vancouver performs a total water quality analysis on its wells once a year. The most current results for 2010 are shown in Table 4.4. Highlighted are the results for the parameters which were above the recommended maximum criteria in the GCDWQ. The GCDWQ is a compilation of recommended limits for substances and conditions that affect drinking water quality. These substances and conditions are given a Maximum Acceptable Concentration (MAC), Interim Maximum Acceptable Concentration (IMAC) or Aesthetic Objective (AO). MACs have been established for certain substances that are known or suspected to cause adverse effects on health. For those substances for which there are insufficient toxicological data to derive a MAC with reasonable certainty, interim values are recommended, or IMACs. AOs apply to certain substances or characteristics of drinking water that can affect its acceptance by consumers.

Iron: The AO for iron is ≤ 0.3 mg/L. Belcarra Picnic Area had an iron level of 0.6 mg/L.

Lead: The MAC for lead is ≤ 0.010 mg/L at the point of consumption. Belcarra Picnic Area Well #2 had a lead level marginally higher, at 0.011 mg/L. This is the first time this well has produced lead above the GCDWQ. The Belcarra Picnic Area water system mixes water from two wells, and the lead for well #1 is nominal at <0.004 mg/L. Thus, at the point of consumption, the levels would be below the MAC.

Arsenic: The MAC for arsenic was lowered from 0.025 mg/L to 0.01 mg/L in 2006. Raw water prior to treatment at Aldergrove Lake marginally exceeds the new MAC, and a water quality advisory was placed on the system in November 2009. An arsenic removal system was commissioned in February 2010. Testing indicated that the arsenic removal unit reduced the concentration of arsenic to below 0.005 mg/L, and the advisory was lifted March 2010. Semi-annual testing in July 2010 as required by the permit indicated that the arsenic reduction media had been expended. The media was calculated to last 2 years, but due to excessive water usage due to a water system leak for over a year, the media was expended sooner than expected. A water leak was found and repaired on the system in December 2010, and the media was replaced in February 2011. A water quality advisory was placed on the water system during the duration. For more information on arsenic, included in Appendix D is a pamphlet from Fraser Health entitled "Health Information on Arsenic".

4.5 Systems Classification

Section 12 of the DWPR states that, "...a person is qualified to operate, maintain or repair a water supply system if the person is certified by the Environmental Operators Certification Program (EOCP) for the class of system as classified under the Environmental Operators Certification Program." All Metro Vancouver Regional Parks were classified in 2004 as "Small Water Systems" by the EOCP. Metro Vancouver Regional Parks uses a certified operator to perform any work on Parks water systems. Currently this is undertaken by RJF Contracting.

In December 2005, amendments to the regulation included defining “small systems” and removing the qualification standards for persons operating “small systems”. Metro Vancouver resubmitted documentation to the EOCP for reclassification in 2006, based on these amendments. Documentation was resubmitted for Aldergrove Lake Potable water system, Belcarra White Pine water system, and Belcarra Picnic Area water system. The EOCP reclassified the Belcarra White Pine system to a Class I Water Treatment Facility. No changes were made to the other systems.

4.6 Emergency Response Plan

Section 13 of the DWPR requires that a water supplier have an emergency response plan in the event of an emergency affecting the waterworks system. Metro Vancouver Regional Parks now has a plan approved and in place to address issues such as positive coliform bacteria, loss disinfection, loss of system integrity and loss of power. The emergency response plan and directories are updated as necessary and posted on the Metro Vancouver internal website.

Included herein is a list of the plans:

- 1) Procedure for Boil Water Advisory-After Business Hours;
- 2) Procedure for Boil Water Advisory-During Business Hours;
- 3) Boil Water Advisory Letter;
- 4) Boil Water Advisory Notice;
- 5) Warning Label (for unfit drinking water);
- 6) Positive Coliform Procedures for Regional Parks;
- 7) Procedure for Loss of Disinfection;
- 8) Procedure for Loss of Electric Power;
- 9) Procedure for Loss of System Integrity; and
- 10) Water System Emergency Response Directories.

Table 4.1: Microbiological and Physical Analysis

Sample ID	Sample Reported Name	Chlorine			Turbidity			Positive Coliform Tests				
		Samples Taken	Low	Average	High	Samples Taken	Low	Average	High	Samples Taken	Total	E-Coli
Aldergrove Lake Potable Water System												
PKS-P-ALD-03	ALD Pot, CL. shed, recirc. tap	54	0.00	0.72	7.90	N/T	N/T	N/T	N/T	N/T	N/T	N/T
PKS-P-ALD-04	ALD Pot, CL. shed, RAW well head tap	N/T	N/T	N/T	N/T	0.06	0.71	27.00	54	4	0	0
PKS-P-ALD-08	ALD Pot, Field by rental, standpipe	25	0.00	1.27	7.50	0.18	0.83	4.00	25	3	0	0
PKS-P-ALD-12	ALD Pot, Beach tables, standpipe	50	0.00	0.44	2.20	0.09	0.31	3.37	50	3	0	0
PKS-P-ALD-16	ALD Pot, Beach, fountain	17	0.04	1.06	7.80	0.09	0.18	0.32	17	0	0	0
PKS-P-ALD-19	ALD Pot, Beach WR, tap in hall	57	0.00	0.62	7.30	0.08	0.21	0.61	57	4	0	0
PKS-P-ALD-21	ALD Pot, Beach East, standpipe	49	0.00	0.62	8.20	0.07	0.39	1.90	49	0	0	0
PARK TOTAL		252				252			252	14	0	0
Belcarra Picnic Area Water System												
PKS-P-BEL-10	BEL PC, Caretaker, hose bib	51	0.16	0.92	7.90	0.15	0.29	0.50	51	0	0	0
PKS-P-BEL-16	BEL PC, CL Shed, tap on 150mm	51	0.13	0.71	8.80	0.18	0.39	0.64	51	0	0	0
PKS-P-BEL-23	BEL PC, Interpretive center sink tap	48	0.20	0.96	8.20	0.18	0.45	1.90	48	0	0	0
PKS-P-BEL-24	BEL PC, Service bldg, first aid room tap	51	0.16	1.00	8.80	N/T	N/T	N/T	N/T	N/T	N/T	N/T
PARK TOTAL		201				150			150	0	0	0
Belcarra White Pine Water System												
PKS-P-BEL-53	BEL W/P, Bldg #1, first aid room tap	48	0.05	0.47	1.80	0.08	0.17	0.53	48	0	0	0
PKS-P-BEL-60	BEL W/P, bldg #2, gallery tap	22	0.03	0.33	1.50	0.09	0.17	0.28	22	0	0	0
PKS-P-BEL-66	BEL W/P, CL shed, RAW tap on 100mm	N/T	N/T	N/T	N/T	0.06	0.11	0.26	51	30	2	2
PKS-P-BEL-67	BEL W/P, CL shed, meter tap	51	0.00	0.76	8.00	N/T	N/T	N/T	N/T	N/T	N/T	N/T
PKS-P-BEL-71	BEL W/P, Maint. bldg., washroom tap	52	0.02	0.44	2.20	0.08	0.20	0.53	52	0	0	0
PARK TOTAL		173				173			173	30	2	2
Lynn Headwaters Water System												
PKS-P-LYN-01	LYN, picnic, hose bib	8	0.00	0.00	0.00	0.07	0.15	0.28	8	0	0	0
PKS-P-LYN-02	LYN, picnic, BC Mills tap	39	0.00	0.00	0.00	0.06	0.10	0.19	53	0	0	0
PARK TOTAL		45				61			61	0	0	0
TOTAL SAMPLES TAKEN IN PARKS		671				636			636			

N/T

Sampling criteria not tested

Water sample taken prior to treatment or no chlorine in treatment process

Table 4.2: Analysis of Chlorine Levels and Microbiology

Sample ID	Sample Reported Name	Chlorine			Positive Coliform Tests		
		Samples Taken	Number of samples with <0.2ppm	Percent of samples with <0.2ppm	Samples Taken	Total	E-Coli
Aldergrove Lake Potable Water System							
PKS-P-ALD-03	ALD Pot, CL shed, recirc. tap	54	31	57%	N/T	N/T	N/T
PKS-P-ALD-04	ALD Pot, CL shed, RAW well head tap	N/T	N/T	N/T	54	4	0
PKS-P-ALD-09	ALD Pot, Field by rental, standpipe	25	8	32%	25	3	0
PKS-P-ALD-12	ALD Pot, Beach tables, standpipe	50	29	58%	50	3	0
PKS-P-ALD-16	ALD Pot, Beach, fountain	17	5	29%	17	0	0
PKS-P-ALD-19	ALD Pot, Beach WR, tap in hall	57	32	56%	57	4	0
PKS-P-ALD-21	ALD Pot, Beach East, standpipe	49	31	63%	49	0	0
Belcarra Picnic Area Water System							
PKS-P-BEL-10	BEL PC, Caretaker, hose bib	51	2	4%	51	0	0
PKS-P-BEL-16	BEL PC, CL Shed, tap on 150mm	51	5	10%	51	0	0
PKS-P-BEL-23	BEL PC, Interpretive center sink tap	48	0	0%	48	0	0
PKS-P-BEL-24	BEL PC, Service bldg, first aid room tap	51	3	6%	N/T	N/T	N/T
Belcarra White Pine Water System							
PKS-P-BEL-53	BEL W/P, Bldg #1, first aid room tap	48	21	44%	48	0	0
PKS-P-BEL-60	BEL W/P, bldg #2, gallery tap	22	10	45%	22	0	0
PKS-P-BEL-66	BEL W/P, CL shed, RAW tap on 100mm	N/T	N/T	N/T	51	30	2
PKS-P-BEL-67	BEL W/P, CL shed, meter tap	51	16	31%	N/T	N/T	N/T
PKS-P-BEL-71	BEL W/P, Maint. bldg., washroom tap	52	28	54%	52	0	0
Lynn Headwaters Water System							
PKS-P-LYN-01	LYN, picnic, hose bib	6	6	100%	8	0	0
PKS-P-LYN-02	LYN, picnic, BC Mills tap	39	39	100%	53	0	0

N/T

Sampling criteria not tested

Water sample taken prior to treatment or no chlorine in treatment process

Table 4.3: Analysis of Turbidity and Microbiology

Sample ID	Sample Reported Name	Turbidity				Positive Coliform Tests	
		Samples Taken	# of samples between 1.0 & 2.0 NTU	% of samples between 1.0 & 2.0 NTU	# of samples above 2.0 NTU	% of samples above 2.0 NTU	Samples Taken
Aldergrove Lake Potable Water System							
PKS-P-ALD-03	ALD Pot, CL. shed, recirc. tap	N/T	N/T	N/T	N/T	N/T	N/T
PKS-P-ALD-04	ALD Pot, CL. shed, RAW well head tap	54	0	0%	2	4%	4
PKS-P-ALD-09	ALD Pot, Field by rental, standpipe	25	4	16%	3	12%	3
PKS-P-ALD-12	ALD Pot, Beach tables, standpipe	50	1	2%	1	2%	3
PKS-P-ALD-16	ALD Pot, Beach, fountain	17	0	0%	0	0%	0
PKS-P-ALD-19	ALD Pot, Beach WR, tap in hall	57	0	0%	0	0%	4
PKS-P-ALD-21	ALD Pot, Beach East, standpipe	49	3	6%	0	0%	0
Belcarra Picnic Area Water System							
PKS-P-BEL-10	BEL PC, Caretaker, hose bib	51	0	0%	0	0%	0
PKS-P-BEL-16	BEL PC, CL Shed, tap on 150mm	51	0	0%	0	0%	0
PKS-P-BEL-23	BEL PC, Interpretive center sink tap	48	2	4%	0	0%	0
PKS-P-BEL-24	BEL PC, Service bldg, first aid room tap	N/T	N/T	N/T	N/T	N/T	N/T
Belcarra White Pine Water System							
PKS-P-BEL-53	BEL WP, Bldg #1, first aid room tap	48	0	0%	0	0%	0
PKS-P-BEL-60	BEL WP, bldg #2, gallery tap	22	0	0%	0	0%	0
PKS-P-BEL-66	BEL WP, CL shed, RAW tap on 100mm	51	0	0%	0	0%	30
PKS-P-BEL-67	BEL WP, CL shed, meter tap	N/T	N/T	N/T	N/T	N/T	N/T
PKS-P-BEL-71	BEL WP, Maint. bldg., washroom tap	52	0	0%	0	0%	0
Lynn Headwaters Water System							
PKS-P-LYN-01	LYN, picnic, hose bib	8	0	0%	0	0%	0
PKS-P-LYN-02	LYN, picnic, BC Mills tap	53	0	0%	0	0%	0

N/T

Sampling criteria not tested
Water sample taken prior to treatment

Table 4.4: Total Water Quality Analysis

Sample Name	PKS-P-ALD-04 ALD Pot - CL shed - RAW well head tap	PKS-P-ALD-05 ALD Pot - Main bldg - kitchen tap	PKS-F-ALD-30 ALD Pot - CL shed - RAW after arsenic removal	PKS-F-BEL-21 BEL FC - CL shed - RAW well #1 Service Yard	PKS-F-BEL-22 BEL FC - CL shed - RAW well #2 playground	PKS-F-BEL-70 BEL WP - Well #1 - RAW water tap	LYN - BC Mills - press tank tap	PKS-P-ALD-04 ALD Pot - CL shed - RAW well head tap	PKS-P-ALD-04 ALD Pot - CL Main bldg - kitchen tap	PKS-F-ALD-30 ALD Pot - CL shed - RAW after arsenic removal	PKS-P-ALD-05 ALD Pot - Main bldg - kitchen tap	PKS-P-ALD-04 ALD Pot - CL shed - RAW well head tap	PKS-F-ALD-30 ALD Pot - CL shed - RAW after arsenic removal
Sample Description	201006722.08.20.00 GRAB	201006722.08.42.00 GRAB	201006722.08.28.00 GRAB	201006723.08.30.00 GRAB	201006723.08.15.00 GRAB	201006723.09.00.00 GRAB	201006723.10.15.00 GRAB	2/10/10 0.00	2/10/10 0.00	2/25/2010 0.00	2/10/10 0.00	2/10/10 0.00	2/25/2010 8.33
Sampled Date	201006722.08.20.00	201006722.08.42.00	201006722.08.28.00	201006723.08.30.00	201006723.08.15.00	201006723.09.00.00	201006723.10.15.00	2/10/10 0.00	2/10/10 0.00	2/25/2010 0.00	2/10/10 0.00	2/10/10 0.00	2/25/2010 8.33
Alkalinity as CaCO3	87	88	87	42	58	34	59						
Aluminum Total	<0.01	<0.01	<0.01	<0.01	0.02	<0.01	<0.01			<0.01	<0.01	<0.01	<0.01
Arsenic Total	0.019	0.013	0.016	0.010	0.007	<0.001	0.001	0.0144	0.0116	0.00118	0.0015	0.0015	0.002
Barium Total	0.005	<0.001	<0.001	0.010	0.002	0.003	0.001				<0.001	<0.001	<0.001
Boron Total	0.05	0.05	0.05	<0.02	0.04	<0.02	<0.02			0.04	0.04	0.04	0.04
Cadmium Total	<0.0005	<0.0005	<0.0005	<0.0005	<0.0005	<0.0005	<0.0005			<0.0005	<0.0005	<0.0005	<0.0005
Calcium Total	11.3	11.6	11.5	35.2	15.4	15.2	19.7			11.0	10.6	11.0	10.7
Carbon Organic - Total	0.46	0.47	0.45	0.24	0.33	0.30	0.29						
Chloride	1.3	2.8	1.3	61.5	41.0	2.4	1.2						
Chromium Total	<0.001	<0.001	<0.001	<0.001	<0.001	<0.001	<0.001			<0.001	<0.001	<0.001	<0.001
Cobalt Total	<0.001	<0.001	<0.001	<0.001	<0.001	<0.001	<0.001			<0.001	<0.001	<0.001	<0.001
Copper Total	1	2	1	34	1	1	1						
Color - Apparent	2	1	2	34	1	1	1						
Color - True	1	<1	1	2	<1	<1	<1						
Conductivity	187	194	189	328	284	96	140						
Copper Total	<0.002	0.003	<0.002	0.005	0.018	0.008	0.003			<0.002	0.113	<0.002	<0.002
Fluoride	0.13	0.13	0.13	0.05	0.12	<0.05	0.07						
Hardness as CaCO3	47.5	48.8	48.5	125	49.0	41.4	58.9						
Iron Total	0.02	0.01	<0.01	0.05	0.60	<0.01	0.01			<0.01	<0.01	<0.01	<0.01
Lead Total	<0.004	<0.004	<0.004	<0.004	0.011	<0.004	<0.004			<0.004	<0.004	<0.004	<0.004
Magnesium Total	4.66	4.85	4.79	8.97	2.56	0.85	2.36			4.56	4.56	4.56	4.59
Manganese Total	0.043	0.003	0.003	0.002	0.004	<0.001	0.003			0.042	0.003	0.042	0.003
Mercury Total	<0.05	<0.05	<0.05	<0.05	<0.05	<0.05	<0.05			<0.05	<0.05	<0.05	<0.05
Molybdenum Total	<0.002	0.002	<0.002	0.002	0.007	0.002	0.009			0.003	<0.002	0.003	<0.002
Nickel Total	<0.001	0.001	<0.001	<0.001	<0.001	<0.001	<0.001			<0.001	<0.001	<0.001	<0.001
Nitrogen - Ammonia as N	0.11	<0.02	0.11	0.03	<0.02	<0.02	<0.02						
Nitrogen - Nitrate as N	0.04	0.04	<0.01	0.11	0.51	0.04	0.04						
Nitrogen - Nitrite as N	<0.01	<0.01	<0.01	<0.01	<0.01	<0.01	<0.01						
Nitrogen - Total Kjeldahl	0.3	0.2	0.2	0.2	0.2	0.2	0.2						
pH	8.1	8.0	8.0	7.1	7.6	6.9	7.7						
Potassium Total	4.94	5.20	5.11	2.43	0.89	0.65	0.37						
Residue Total Dissolved	126	119	120	205	145	68	95						
Selenium Total	<0.001	<0.001	<0.001	<0.001	<0.001	<0.001	<0.001			<0.001	<0.001	<0.001	<0.001
Silver Total	<0.001	<0.001	<0.001	<0.001	<0.001	<0.001	<0.001			<0.001	<0.001	<0.001	<0.001
Sodium Total	18.4	20.9	19.0	9.3	36.6	2.8	6.0			18.6	19.2	18.6	19.2
Sulphate	6.8	6.8	6.8	16.8	12.5	7.0	8.4						
Zinc Total	0.003	0.007	<0.002	0.019	0.019	0.011	0.024			0.002	0.063	0.002	0.004

- Value outside of the Canadian Drinking Water Guideline standard

5.0 CONCLUSIONS

- 5.1 Drinking water supplied throughout the Parks systems on the whole was in compliance with the standards of the DWPR with the exception of Aldergrove Lake;
- 5.2 Metro Vancouver Regional Parks exceeded the sampling requirements of the Regulations;
- 5.3 The Fraser Health Authority water quality objective recommended for residual chlorine of more than 0.2 mg/L was met on average throughout the Parks system with the exception of Aldergrove Lake;
- 5.4 The water quality objective for turbidity of <1 NTU was met on average in Metro Vancouver Regional Parks water systems;
- 5.5 The MAC for arsenic in the GCDWQ is 0.010 mg/L. The arsenic reduction unit installed at Aldergrove Lake is allowing the treated water to be within the limits of the regulation and permit;
- 5.6 The Campbell Valley Equestrian Center is still posted indicating that the water is not fit for human consumption. This posting will remain in place until the source is changed to municipal or when the source is treated or no longer required;
- 5.7 The lake water system in Belcarra White Pine reduced the amount of water flow on the drinking water system at this location; and
- 5.8 The combination of monitoring and meeting the standards of the DWPR as well as meeting Parks objectives for residual chlorine and turbidity and other parameters of the GCDWQ ensures a safe drinking water supply in Metro Vancouver Regional Parks.

6.0 RECOMMENDATIONS

- 6.1 Monitor Belcarra White Pine water system for low chlorine residuals at the endpoints and ensure the flush point is maintaining a chlorine residual in the system during the winter months;
- 6.2 Monitor Aldergrove Lake water system for low chlorine residual at the endpoints and ensure system is flushed regularly to ensure total compliance with the standards of the DWPR.
- 6.3 Water from Aldergrove Lake water system downstream of the treatment process indicates that the arsenic concentration in the drinking water supplied to park users and workers is within the GCDWQ limits. Monitor the arsenic levels every six months as per the permit requirements;
- 6.4 Once available, Metro Vancouver Regional Parks will be pursuing a connection to the Village of Belcarra municipal water system for drinking water only in 2011. The existing well water system will be maintained and used for toilet flushing only; and

- 6.5 The White Pine Lake Water System is used for toilet flushing only while being treated to drinking water standards as per the regulations at the time it was installed. Metro Vancouver Regional Parks will pursue discussions with the Fraser Valley Health Authority regarding the possibility of reducing treatment requirements for this system.

APPENDIX A – FIELD SAMPLING PROCEDURES

Water Sampling Procedures

1.0 Introduction

Outlined below is a summary of water sampling procedures used by Quality Control field staff to ensure that established sampling and analytical procedures are followed. Sampling staff receive relevant training as well as detailed written procedures for sampling and field tests. These procedures are specific to sampling activities carried out in Metro Vancouver's Regional Parks and Housing locations. At these locations, the operation and maintenance of water treatment systems and corresponding sampling sites are the responsibility of Regional Parks and Housing.

2.0 Record Keeping

It is critical that accurate records are kept to prove the validity and integrity of samples. Information is recorded on field sheets or logged into a barcode scanner. Collected samples brought into the laboratory without the appropriate information may be discarded.

The time of sample collection must be recorded. When the bar code located at a water-sample site is scanned, the date and time are automatically entered into the barcode scanner as soon as the SAVE button is pressed. If the sample is being collected at a site that has no bar code, the pertinent information is recorded on a field sheet.

Any unusual events that may affect field and laboratory results must be reported and documented. Unusual events include broken sample lines, high/low free-chlorine results, unusual odor, or any other visual observations. As well, anomalous sample results may require repeat sampling.

3.0 Potable Water Sampling

Bacteriology

Sample lines in Regional Parks and Housing Locations are not continuously running. Therefore the lines must be properly flushed before collecting a sample. The sample lines may include bathroom taps, outside hose bibs, pressure taps in chlorination facilities, and kitchen taps. If the sample tap is a bathroom tap, outside hose bib (the hose is disconnect before sampling), or a kitchen tap, the tap must be sterilized using a diluted bleach solution in a spray bottle. Only the cold-water tap is used; the sample line must be flushed for at least 2 minutes or until the water temperature has stabilized, whichever takes longer.

The flow should be adjusted so that water does not splash against the sink or other surfaces, and the water from the line should not flow over the outside of the bottle when sampling. A 250-mL plastic, pre sterilized bottle is used to collect a bacteriology sample.

If the sample location is chlorinated, a free-chlorine test is conducted before collecting a grab sample for bacteriological examination.

The sample must be collected using sampling techniques to avoid contaminating the bottle and sample. The aluminum foil on the cap of the bottle must remain there at all times, and the cap on the bottle until the bottle is ready to be filled. The cap must be in the Sampler's hand, face down, while the bottle is being filled being cautious not to

contaminate the inner surface of the cap or neck of the bottle with the Sampler's hands. The bottle is not to be rinsed.

The bottle is filled leaving an air space of about one inch in the bottle. The cap on the bottle is replaced immediately after sampling.

The time at which the bacteriology sample was taken and the result of the free-chlorine measurement is recorded on the field sheet or entered into the scanning device.

Depending on the site, the sampling frequency can vary and includes weekly and biweekly sampling, quarterly sampling as well as seasonal weekly and biweekly sampling.

Turbidity

The sample line must be flushed for at least 2 minutes or until the water temperature has stabilized, whichever takes longer. Following the collection of a bacteriology sample, another sample is taken in a 125 mL pre-cleaned plastic bottle for turbidity testing by the laboratory.

Temperature

The sample line must be flushed for at least 2 minutes or until the water temperature has stabilized, whichever takes longer. A digital thermometer is used to measure water temperature in the field. The thermometer is never placed into the bacteriology sample bottle. The thermometer is held in the water source for a couple of minutes until the reading remains constant. Record the temperature reading on the field sheet or enter it into the scanner device.

Free Chlorine

The sample line must be flushed for at least 2 minutes or until the water temperature has stabilized, whichever takes longer. The level of free chlorine in a water sample is measured in the field by using a Hach Pocket Colorimeter II. Rinse the glass vial 3 to 4 times. Fill the vial to the 10 mL mark with the water sample; then cap the vial and wipe dry with lint-free tissue.

Remove the instrument cap and place the sample in the cell holder (with the diamond on the vial facing you). Tightly cover the vial with the instrument cap (light shield) to 'zero' the sample. Press ZERO. The instrument will turn on and display will show 0.00.

Remove the vial from the cell holder and uncap the vial. Add one squirt of Free DPD from DPD dispenser to the sample in the vial. Re-cap the vial and turn it gently upside down 5 to 6 times (20 seconds). Excessive agitation must be avoided.

As soon as possible (within 30 seconds) place the sample in the cell holder and tightly cover with the instrument cap. Press READ. The instrument will show the concentration of the sample in mg/L free chlorine. Record the result on the field sheet or enter it into the scanning device.

4.0 Recreational Water Sampling

Recreational waters at Regional Parks are sampled and tested frequently to ensure that public health is protected in the region through the safety of its recreational waters.

These waters are used for activities such as swimming, windsurfing, waterskiing, boating and fishing.

The bacteriological quality of the recreational waters is monitored on a weekly basis throughout the bathing beach season from May to September. A minimum of five samples are collected from each site within a 30-day period.

Wearing chest waders, the Sampler is to wade to a depth of about knee height (2 ½ to 3 feet) being careful not to stir up sediment on the bottom before taking a sample of free moving water.

The sample must be collected using sampling techniques to avoid contaminating the bottle and sample. The aluminum foil on the cap of the bottle must remain there at all times, and the cap on the bottle until the bottle is ready to be filled. The cap must be in the Sampler's hand, face down, while the bottle is being filled being cautious not to contaminate the inner surface of the cap or neck of the bottle with the Sampler's hands. The bottle is not to be rinsed.

The bottle is held by the bottom and plunged into the water to a depth of 6 inches. The bottle is removed once full. Care must be taken to not collect any sand or other foreign materials. Pour out any excess water in the bottle leaving the desired 1 inch air space in the bottle.

The time the sample was taken is recorded on the field sheet.

5.0 Sample Transportation

The samples must be kept cold but not frozen. Ice packs are provided in the lab. The bottles must be kept cold in an upright position, and in the dark. The samples must be delivered to the lab as soon as possible; there are strict limits to laboratory sample-holding times.

**APPENDIX B – METRO VANCOUVER REGIONAL PARKS POTABLE WATER SAMPLES
2010**

Sampling point	Sample type	Sample reported name	Sampled date	Chlorine Free mg/L	Ecoli MF/100 mLS	Ecoli MPN/100 mLS	Temp °C	Total Coliform MF/100mLS	Total Coliform MPN/100mLS	Turbidity NTU
PKS-P-ALD-03	GRAB	ALD Pot, CL. shed, recirc. tap	4-Jan-10	0.06						
PKS-P-ALD-03	GRAB	ALD Pot, CL. shed, recirc. tap	14-Jan-10	0.06						
PKS-P-ALD-03	GRAB	ALD Pot, CL. shed, recirc. tap	21-Jan-10	0.06						
PKS-P-ALD-03	GRAB	ALD Pot, CL. shed, recirc. tap	28-Jan-10	<0.01						
PKS-P-ALD-03	GRAB	ALD Pot, CL. shed, recirc. tap	1-Feb-10	<0.01						
PKS-P-ALD-03	GRAB	ALD Pot, CL. shed, recirc. tap	10-Feb-10	0.09						
PKS-P-ALD-03	GRAB	ALD Pot, CL. shed, recirc. tap	15-Feb-10	0.02						
PKS-P-ALD-03	GRAB	ALD Pot, CL. shed, recirc. tap	23-Feb-10	0.04						
PKS-P-ALD-03	GRAB	ALD Pot, CL. shed, recirc. tap	1-Mar-10	0.07						
PKS-P-ALD-03	GRAB	ALD Pot, CL. shed, recirc. tap	10-Mar-10	0.04						
PKS-P-ALD-03	GRAB	ALD Pot, CL. shed, recirc. tap	11-Mar-10	0.06						
PKS-P-ALD-03	GRAB	ALD Pot, CL. shed, recirc. tap	12-Mar-10	0.07						
PKS-P-ALD-03	GRAB	ALD Pot, CL. shed, recirc. tap	16-Mar-10	0.04						
PKS-P-ALD-03	GRAB	ALD Pot, CL. shed, recirc. tap	22-Mar-10	0.07						
PKS-P-ALD-03	GRAB	ALD Pot, CL. shed, recirc. tap	29-Mar-10	0.02						
PKS-P-ALD-03	GRAB	ALD Pot, CL. shed, recirc. tap	7-Apr-10	0.06						
PKS-P-ALD-03	GRAB	ALD Pot, CL. shed, recirc. tap	14-Apr-10	0.08						
PKS-P-ALD-03	GRAB	ALD Pot, CL. shed, recirc. tap	20-Apr-10	0.04						
PKS-P-ALD-03	GRAB	ALD Pot, CL. shed, recirc. tap	27-Apr-10	<0.01						
PKS-P-ALD-03	GRAB	ALD Pot, CL. shed, recirc. tap	4-May-10	0.04						
PKS-P-ALD-03	GRAB	ALD Pot, CL. shed, recirc. tap	12-May-10	0.05						
PKS-P-ALD-03	GRAB	ALD Pot, CL. shed, recirc. tap	18-May-10	0.05						
PKS-P-ALD-03	GRAB	ALD Pot, CL. shed, recirc. tap	27-May-10	0.05						
PKS-P-ALD-03	GRAB	ALD Pot, CL. shed, recirc. tap	2-Jun-10	0.03						
PKS-P-ALD-03	GRAB	ALD Pot, CL. shed, recirc. tap	8-Jun-10	2.2						
PKS-P-ALD-03	GRAB	ALD Pot, CL. shed, recirc. tap	15-Jun-10	7.9						
PKS-P-ALD-03	GRAB	ALD Pot, CL. shed, recirc. tap	22-Jun-10	1						
PKS-P-ALD-03	GRAB	ALD Pot, CL. shed, recirc. tap	28-Jun-10	1.8						
PKS-P-ALD-03	GRAB	ALD Pot, CL. shed, recirc. tap	6-Jul-10	1.6						
PKS-P-ALD-03	GRAB	ALD Pot, CL. shed, recirc. tap	13-Jul-10	1.4						
PKS-P-ALD-03	GRAB	ALD Pot, CL. shed, recirc. tap	19-Jul-10	1.1						
PKS-P-ALD-03	GRAB	ALD Pot, CL. shed, recirc. tap	28-Jul-10	0.22						
PKS-P-ALD-03	GRAB	ALD Pot, CL. shed, recirc. tap	4-Aug-10	0.07						
PKS-P-ALD-03	GRAB	ALD Pot, CL. shed, recirc. tap	10-Aug-10	0.05						
PKS-P-ALD-03	GRAB	ALD Pot, CL. shed, recirc. tap	18-Aug-10	1.8						
PKS-P-ALD-03	GRAB	ALD Pot, CL. shed, recirc. tap	24-Aug-10	1.5						
PKS-P-ALD-03	GRAB	ALD Pot, CL. shed, recirc. tap	30-Aug-10	1.7						
PKS-P-ALD-03	GRAB	ALD Pot, CL. shed, recirc. tap	9-Sep-10	0.11						
PKS-P-ALD-03	GRAB	ALD Pot, CL. shed, recirc. tap	14-Sep-10	0.06						
PKS-P-ALD-03	GRAB	ALD Pot, CL. shed, recirc. tap	21-Sep-10	0.04						
PKS-P-ALD-03	GRAB	ALD Pot, CL. shed, recirc. tap	28-Sep-10	1.4						
PKS-P-ALD-03	GRAB	ALD Pot, CL. shed, recirc. tap	5-Oct-10	1.6						
PKS-P-ALD-03	GRAB	ALD Pot, CL. shed, recirc. tap	12-Oct-10	1.4						
PKS-P-ALD-03	GRAB	ALD Pot, CL. shed, recirc. tap	19-Oct-10	1						
PKS-P-ALD-03	GRAB	ALD Pot, CL. shed, recirc. tap	26-Oct-10	0.99						
PKS-P-ALD-03	GRAB	ALD Pot, CL. shed, recirc. tap	3-Nov-10	0.04						
PKS-P-ALD-03	GRAB	ALD Pot, CL. shed, recirc. tap	9-Nov-10	0.13						
PKS-P-ALD-03	GRAB	ALD Pot, CL. shed, recirc. tap	16-Nov-10	0.44						
PKS-P-ALD-03	GRAB	ALD Pot, CL. shed, recirc. tap	22-Nov-10	1.8						
PKS-P-ALD-03	GRAB	ALD Pot, CL. shed, recirc. tap	30-Nov-10	0.89						
PKS-P-ALD-03	GRAB	ALD Pot, CL. shed, recirc. tap	6-Dec-10	1						
PKS-P-ALD-03	GRAB	ALD Pot, CL. shed, recirc. tap	14-Dec-10	1.6						
PKS-P-ALD-03	GRAB	ALD Pot, CL. shed, recirc. tap	20-Dec-10	1.4						
PKS-P-ALD-03	GRAB	ALD Pot, CL. shed, recirc. tap	31-Dec-10	1.6						
PKS-P-ALD-09	GRAB	ALD Pot, Field by rental, standpipe	11-Jun-10	3.7	<1		12	<1		4
PKS-P-ALD-09	GRAB	ALD Pot, Field by rental, standpipe	15-Jun-10	7.5	<1		13	<1		0.23
PKS-P-ALD-09	GRAB	ALD Pot, Field by rental, standpipe	22-Jun-10	0.89	<1		11	<1		2.4
PKS-P-ALD-09	GRAB	ALD Pot, Field by rental, standpipe	28-Jun-10	1.8	<1		11	<1		1.3
PKS-P-ALD-09	GRAB	ALD Pot, Field by rental, standpipe	6-Jul-10	1.7	<1		12	<1		1.6
PKS-P-ALD-09	GRAB	ALD Pot, Field by rental, standpipe	13-Jul-10	1.4	<1		15	<1		1.1
PKS-P-ALD-09	GRAB	ALD Pot, Field by rental, standpipe	19-Jul-10	1.1	<1		12	<1		1.4
PKS-P-ALD-09	GRAB	ALD Pot, Field by rental, standpipe	28-Jul-10	0.09	<1		12	<1		0.3
PKS-P-ALD-09	GRAB	ALD Pot, Field by rental, standpipe	4-Aug-10	0.09	<1		14	4		0.23
PKS-P-ALD-09	GRAB	ALD Pot, Field by rental, standpipe	10-Aug-10	<0.01	<1		14	1		0.36
PKS-P-ALD-09	REPEAT	ALD Pot, Field by rental, standpipe	13-Aug-10	1.4	<1		16	<1		0.28
PKS-P-ALD-09	GRAB	ALD Pot, Field by rental, standpipe	18-Aug-10	1.7	<1		15	<1		0.18
PKS-P-ALD-09	GRAB	ALD Pot, Field by rental, standpipe	24-Aug-10	1.5	<1		13	<1		0.55
PKS-P-ALD-09	GRAB	ALD Pot, Field by rental, standpipe	30-Aug-10	1.4	<1		13	<1		0.45
PKS-P-ALD-09	GRAB	ALD Pot, Field by rental, standpipe	9-Sep-10	1	<1		16	<1		0.4
PKS-P-ALD-09	GRAB	ALD Pot, Field by rental, standpipe	14-Sep-10	0.06	<1		13	<1		0.22
PKS-P-ALD-09	GRAB	ALD Pot, Field by rental, standpipe	21-Sep-10	0.06	<1		13	2		0.34
PKS-P-ALD-09	GRAB	ALD Pot, Field by rental, standpipe	28-Sep-10	1.4	<1		14	<1		3.3
PKS-P-ALD-09	GRAB	ALD Pot, Field by rental, standpipe	5-Oct-10	1.3	<1		15	<1		0.32
PKS-P-ALD-09	GRAB	ALD Pot, Field by rental, standpipe	12-Oct-10	1.4	<1		13	<1		0.32
PKS-P-ALD-09	GRAB	ALD Pot, Field by rental, standpipe	19-Oct-10	1	<1		12	<1		0.38

Sampling point	Sample type	Sample reported name	Sampled date	Chlorine Free mg/L	Ecoli MF/100 mLs	Ecoli MPN/100 mLs	Temp °C	Total Coliform MF/100mLs	Total Coliform MPN/100mLs	Turbidity NTU
PKS-P-ALD-09	GRAB	ALD Pot, Field by rental, standpipe	26-Oct-10	0.86	<1		14	<1		0.29
PKS-P-ALD-09	GRAB	ALD Pot, Field by rental, standpipe	3-Nov-10	0.11	<1		12	<1		0.26
PKS-P-ALD-09	GRAB	ALD Pot, Field by rental, standpipe	9-Nov-10	0.11	<1		12	<1		0.21
PKS-P-ALD-09	GRAB	ALD Pot, Field by rental, standpipe	16-Nov-10	0.12	<1		11	<1		0.21
PKS-P-ALD-12	GRAB	ALD Pot, Beach tables, standpipe	4-Jan-10	0.07	<1		5.5	<1		0.22
PKS-P-ALD-12	GRAB	ALD Pot, Beach tables, standpipe	14-Jan-10	0.06	<1		7	<1		0.37
PKS-P-ALD-12	GRAB	ALD Pot, Beach tables, standpipe	21-Jan-10	0.1	<1		6.5	<1		1.3
PKS-P-ALD-12	GRAB	ALD Pot, Beach tables, standpipe	28-Jan-10	0.06	<1		7.2	<1		0.29
PKS-P-ALD-12	GRAB	ALD Pot, Beach tables, standpipe	1-Feb-10	0.08	<1		7.1	<1		0.5
PKS-P-ALD-12	GRAB	ALD Pot, Beach tables, standpipe	10-Feb-10	0.17	<1		7.1	<1		0.78
PKS-P-ALD-12	GRAB	ALD Pot, Beach tables, standpipe	15-Feb-10	0.04	<1		7	<1		0.53
PKS-P-ALD-12	GRAB	ALD Pot, Beach tables, standpipe	10-Mar-10	0.01	<1		7.8	<1		0.11
PKS-P-ALD-12	GRAB	ALD Pot, Beach tables, standpipe	11-Mar-10	0.08	<1		7.9	<1		0.13
PKS-P-ALD-12	GRAB	ALD Pot, Beach tables, standpipe	12-Mar-10	0.08	<1		7.8	1		0.2
PKS-P-ALD-12	REPEAT	ALD Pot, Beach tables, standpipe	14-Mar-10	<0.01	<1		6	<1		[Turb bottle: 3.37 NTU] 1.4
PKS-P-ALD-12	REPEAT	ALD Pot, Beach tables, standpipe	15-Mar-10	<0.01	<1		6	<1		0.28
PKS-P-ALD-12	REPEAT	ALD Pot, Beach tables, standpipe	16-Mar-10	0.03	<1		8.2	<1		0.18
PKS-P-ALD-12	GRAB	ALD Pot, Beach tables, standpipe	22-Mar-10	0.03	<1		8.2	<1		0.15
PKS-P-ALD-12	GRAB	ALD Pot, Beach tables, standpipe	29-Mar-10	0.04	<1		9	<1		0.09
PKS-P-ALD-12	GRAB	ALD Pot, Beach tables, standpipe	7-Apr-10	0.02	<1		8	<1		0.16
PKS-P-ALD-12	GRAB	ALD Pot, Beach tables, standpipe	14-Apr-10	0.05	<1		9.5	<1		0.13
PKS-P-ALD-12	GRAB	ALD Pot, Beach tables, standpipe	20-Apr-10	0.06	<1		11	<1		0.2
PKS-P-ALD-12	GRAB	ALD Pot, Beach tables, standpipe	27-Apr-10	<0.01	<1		10	<1		0.29
PKS-P-ALD-12	GRAB	ALD Pot, Beach tables, standpipe	4-May-10	0.08	<1		9.7	<1		0.16
PKS-P-ALD-12	GRAB	ALD Pot, Beach tables, standpipe	12-May-10	0.07	<1		12	<1		0.28
PKS-P-ALD-12	GRAB	ALD Pot, Beach tables, standpipe	18-May-10	0.03	<1		12	<1		0.18
PKS-P-ALD-12	GRAB	ALD Pot, Beach tables, standpipe	27-May-10	0.06	<1		12	<1		0.16
PKS-P-ALD-12	GRAB	ALD Pot, Beach tables, standpipe	2-Jun-10	0.03	<1		13	<1		0.16
PKS-P-ALD-12	GRAB	ALD Pot, Beach tables, standpipe	8-Jun-10	0.04	<1		12	<1		0.22
PKS-P-ALD-12	GRAB	ALD Pot, Beach tables, standpipe	15-Jun-10	0.62	<1		13	<1		0.2
PKS-P-ALD-12	GRAB	ALD Pot, Beach tables, standpipe	22-Jun-10	2.2	<1		14	<1		0.24
PKS-P-ALD-12	GRAB	ALD Pot, Beach tables, standpipe	28-Jun-10	0.09	<1		14	<1		0.34
PKS-P-ALD-12	GRAB	ALD Pot, Beach tables, standpipe	6-Jul-10	1.5	<1		14	<1		0.34
PKS-P-ALD-12	GRAB	ALD Pot, Beach tables, standpipe	13-Jul-10	1.3	<1		14	<1		0.36
PKS-P-ALD-12	GRAB	ALD Pot, Beach tables, standpipe	19-Jul-10	0.86	<1		15	<1		0.51
PKS-P-ALD-12	GRAB	ALD Pot, Beach tables, standpipe	28-Jul-10	0.76	<1		16	<1		0.27
PKS-P-ALD-12	GRAB	ALD Pot, Beach tables, standpipe	4-Aug-10	0.04	<1		18	1		0.16
PKS-P-ALD-12	GRAB	ALD Pot, Beach tables, standpipe	10-Aug-10	0.03	<1		17	1		0.13
PKS-P-ALD-12	REPEAT	ALD Pot, Beach tables, standpipe	13-Aug-10	0.37	<1		16	<1		0.26
PKS-P-ALD-12	GRAB	ALD Pot, Beach tables, standpipe	18-Aug-10	1.8	<1		15	<1		0.12
PKS-P-ALD-12	GRAB	ALD Pot, Beach tables, standpipe	24-Aug-10	1.5	<1		14	<1		0.23
PKS-P-ALD-12	GRAB	ALD Pot, Beach tables, standpipe	30-Aug-10	1.1	<1		18	<1		0.13
PKS-P-ALD-12	GRAB	ALD Pot, Beach tables, standpipe	9-Sep-10	0.85	<1		17	<1		0.19
PKS-P-ALD-12	GRAB	ALD Pot, Beach tables, standpipe	14-Sep-10	0.96	<1		15	<1		0.18
PKS-P-ALD-12	GRAB	ALD Pot, Beach tables, standpipe	21-Sep-10	0.81	<1		16	<1		0.11
PKS-P-ALD-12	GRAB	ALD Pot, Beach tables, standpipe	28-Sep-10	0.73	<1		15	<1		0.11
PKS-P-ALD-12	GRAB	ALD Pot, Beach tables, standpipe	5-Oct-10	0.52	<1		15	<1		0.29
PKS-P-ALD-12	GRAB	ALD Pot, Beach tables, standpipe	12-Oct-10	0.61	<1		14	<1		0.13
PKS-P-ALD-12	GRAB	ALD Pot, Beach tables, standpipe	19-Oct-10	0.95	<1		13	<1		0.17
PKS-P-ALD-12	GRAB	ALD Pot, Beach tables, standpipe	26-Oct-10	1.1	<1		12	<1		0.16
PKS-P-ALD-12	GRAB	ALD Pot, Beach tables, standpipe	3-Nov-10	0.95	<1		12	<1		0.16
PKS-P-ALD-12	GRAB	ALD Pot, Beach tables, standpipe	9-Nov-10	0.62	<1		12	<1		0.17
PKS-P-ALD-12	GRAB	ALD Pot, Beach tables, standpipe	16-Nov-10	0.47	<1		10	<1		0.12
PKS-P-ALD-12	GRAB	ALD Pot, Beach tables, standpipe	22-Nov-10	<0.01	<1		8.8	<1		0.14
PKS-P-ALD-16	GRAB	ALD Pot, Beach, fountain	2-Jun-10	0.06	<1		13	<1		0.32
PKS-P-ALD-16	GRAB	ALD Pot, Beach, fountain	8-Jun-10	0.04	<1		13	<1		0.22
PKS-P-ALD-16	GRAB	ALD Pot, Beach, fountain	15-Jun-10	7.8	<1		14	<1		0.27
PKS-P-ALD-16	GRAB	ALD Pot, Beach, fountain	22-Jun-10	0.81	<1		14	<1		0.3
PKS-P-ALD-16	GRAB	ALD Pot, Beach, fountain	28-Jun-10	1.6	<1		15	<1		0.23
PKS-P-ALD-16	GRAB	ALD Pot, Beach, fountain	6-Jul-10	1.5	<1		15	<1		0.17
PKS-P-ALD-16	GRAB	ALD Pot, Beach, fountain	13-Jul-10	1.2	<1		16	<1		0.18
PKS-P-ALD-16	GRAB	ALD Pot, Beach, fountain	19-Jul-10	0.88	<1		16	<1		0.15
PKS-P-ALD-16	GRAB	ALD Pot, Beach, fountain	28-Jul-10	0.49	<1		17	<1		0.14
PKS-P-ALD-16	GRAB	ALD Pot, Beach, fountain	4-Aug-10	0.1	<1		18	<1		0.09
PKS-P-ALD-16	GRAB	ALD Pot, Beach, fountain	10-Aug-10	0.05	<1		18	<1		0.16
PKS-P-ALD-16	GRAB	ALD Pot, Beach, fountain	18-Aug-10	0.67	<1		15	<1		0.14
PKS-P-ALD-16	GRAB	ALD Pot, Beach, fountain	24-Aug-10	0.54	<1		16	<1		0.15
PKS-P-ALD-16	GRAB	ALD Pot, Beach, fountain	30-Aug-10	0.83	<1		18	<1		0.14
PKS-P-ALD-16	GRAB	ALD Pot, Beach, fountain	9-Sep-10	1	<1		17	<1		0.13
PKS-P-ALD-16	GRAB	ALD Pot, Beach, fountain	14-Sep-10	0.43	<1		15	<1		0.13
PKS-P-ALD-16	GRAB	ALD Pot, Beach, fountain	21-Sep-10	0.06	<1		15	<1		0.1
PKS-P-ALD-19	GRAB	ALD Pot, Beach WR, tap in hall	4-Jan-10	0.03	<1		7.1	<1		0.5

Sampling point	Sample type	Sample reported name	Sampled date	Chlorine Free mg/L	Ecoli MF/100 mLS	Ecoli MPN/100 mLS	Temp °C	Total Coliform MF/100mLS	Total Coliform MPN/100mLS	Turbidity NTU
PKS-P-ALD-19	GRAB	ALD Pot, Beach WR, tap in hall	14-Jan-10	0.04	<1		8.5	<1		0.22
PKS-P-ALD-19	GRAB	ALD Pot, Beach WR, tap in hall	21-Jan-10	0.05	<1		8	<1		0.15
PKS-P-ALD-19	GRAB	ALD Pot, Beach WR, tap in hall	28-Jan-10	0.04	<1		8.8	<1		0.16
PKS-P-ALD-19	GRAB	ALD Pot, Beach WR, tap in hall	1-Feb-10	0.11	<1		9.3	<1		0.12
PKS-P-ALD-19	GRAB	ALD Pot, Beach WR, tap in hall	10-Feb-10	0.09	<1		8.1	<1		0.24
PKS-P-ALD-19	GRAB	ALD Pot, Beach WR, tap in hall	15-Feb-10	0.04	<1		9.7	<1		0.14
PKS-P-ALD-19	GRAB	ALD Pot, Beach WR, tap in hall	23-Feb-10	0.06	<1		9	1		0.16
PKS-P-ALD-19	GRAB	ALD Pot, Beach WR, tap in hall	1-Mar-10	0.07	<1		8.1	<1		0.11
PKS-P-ALD-19	GRAB	ALD Pot, Beach WR, tap in hall	10-Mar-10	0.02	<1		10	<1		0.16
PKS-P-ALD-19	GRAB	ALD Pot, Beach WR, tap in hall	11-Mar-10	0.06	<1		8.6	<1		0.17
PKS-P-ALD-19	GRAB	ALD Pot, Beach WR, tap in hall	12-Mar-10	0.06	<1		8.5	<1		0.16
PKS-P-ALD-19	GRAB	ALD Pot, Beach WR, tap in hall	16-Mar-10	0.02	<1		9.2	<1		0.18
PKS-P-ALD-19	GRAB	ALD Pot, Beach WR, tap in hall	22-Mar-10	0.05	<1		9.3	<1		0.1
PKS-P-ALD-19	GRAB	ALD Pot, Beach WR, tap in hall	29-Mar-10	0.02	<1		9.7	<1		0.1
PKS-P-ALD-19	GRAB	ALD Pot, Beach WR, tap in hall	7-Apr-10	0.09	<1		8.2	<1		0.18
PKS-P-ALD-19	GRAB	ALD Pot, Beach WR, tap in hall	14-Apr-10	0.03	<1		9	<1		0.11
PKS-P-ALD-19	GRAB	ALD Pot, Beach WR, tap in hall	20-Apr-10	0.07	<1		11	<1		0.26
PKS-P-ALD-19	GRAB	ALD Pot, Beach WR, tap in hall	27-Apr-10	<0.01	<1		12	<1		0.3
PKS-P-ALD-19	GRAB	ALD Pot, Beach WR, tap in hall	4-May-10	0.07	<1		11	<1		0.15
PKS-P-ALD-19	GRAB	ALD Pot, Beach WR, tap in hall	12-May-10	0.04	<1		9.1	1		0.25
PKS-P-ALD-19	GRAB	ALD Pot, Beach WR, tap in hall	18-May-10	0.06	<1		12	<1		0.17
PKS-P-ALD-19	GRAB	ALD Pot, Beach WR, tap in hall	27-May-10	0.06	<1		13	<1		0.36
PKS-P-ALD-19	GRAB	ALD Pot, Beach WR, tap in hall	2-Jun-10	0.02	<1		12	1		0.32
PKS-P-ALD-19	REPEAT	ALD Pot, Beach WR, tap in hall	3-Jun-10	<0.01	<1		14	<1		0.32
PKS-P-ALD-19	GRAB	ALD Pot, Beach WR, tap in hall	8-Jun-10	0.09	<1		13	<1		0.2
PKS-P-ALD-19	GRAB	ALD Pot, Beach WR, tap in hall	9-Jun-10	0.84	<1		14	<1		0.2
PKS-P-ALD-19	GRAB	ALD Pot, Beach WR, tap in hall	15-Jun-10	7.3	<1		13	<1		0.29
PKS-P-ALD-19	GRAB	ALD Pot, Beach WR, tap in hall	22-Jun-10	0.9	<1		13	<1		0.61
PKS-P-ALD-19	GRAB	ALD Pot, Beach WR, tap in hall	28-Jun-10	1.7	<1		15	<1		0.26
PKS-P-ALD-19	GRAB	ALD Pot, Beach WR, tap in hall	6-Jul-10	1.6	<1		14	<1		0.3
PKS-P-ALD-19	GRAB	ALD Pot, Beach WR, tap in hall	13-Jul-10	1.2	<1		14	<1		0.24
PKS-P-ALD-19	GRAB	ALD Pot, Beach WR, tap in hall	19-Jul-10	0.83	<1		16	<1		0.19
PKS-P-ALD-19	GRAB	ALD Pot, Beach WR, tap in hall	28-Jul-10	0.71	<1		14	<1		0.18
PKS-P-ALD-19	GRAB	ALD Pot, Beach WR, tap in hall	4-Aug-10	0.06	<1		17	<1		0.08
PKS-P-ALD-19	GRAB	ALD Pot, Beach WR, tap in hall	10-Aug-10	0.06	<1		17	2		0.12
PKS-P-ALD-19	REPEAT	ALD Pot, Beach WR, tap in hall	13-Aug-10	1.4	<1		18	<1		0.16
PKS-P-ALD-19	GRAB	ALD Pot, Beach WR, tap in hall	18-Aug-10	1.8	<1		17	<1		0.14
PKS-P-ALD-19	GRAB	ALD Pot, Beach WR, tap in hall	24-Aug-10	1.2	<1		15	<1		0.14
PKS-P-ALD-19	GRAB	ALD Pot, Beach WR, tap in hall	30-Aug-10	1.4	<1		18	<1		0.13
PKS-P-ALD-19	GRAB	ALD Pot, Beach WR, tap in hall	9-Sep-10	0.62	<1		17	<1		0.11
PKS-P-ALD-19	GRAB	ALD Pot, Beach WR, tap in hall	14-Sep-10	1	<1		13	<1		0.12
PKS-P-ALD-19	GRAB	ALD Pot, Beach WR, tap in hall	21-Sep-10	0.06	<1		15	<1		0.18
PKS-P-ALD-19	GRAB	ALD Pot, Beach WR, tap in hall	28-Sep-10	1.1	<1		15	<1		0.18
PKS-P-ALD-19	GRAB	ALD Pot, Beach WR, tap in hall	5-Oct-10	1	<1		16	<1		0.18
PKS-P-ALD-19	GRAB	ALD Pot, Beach WR, tap in hall	12-Oct-10	1.5	<1		14	<1		0.21
PKS-P-ALD-19	GRAB	ALD Pot, Beach WR, tap in hall	19-Oct-10	0.87	<1		14	<1		0.28
PKS-P-ALD-19	GRAB	ALD Pot, Beach WR, tap in hall	26-Oct-10	0.69	<1		16	<1		0.16
PKS-P-ALD-19	GRAB	ALD Pot, Beach WR, tap in hall	3-Nov-10	0.07	<1		12	<1		0.16
PKS-P-ALD-19	GRAB	ALD Pot, Beach WR, tap in hall	9-Nov-10	0.06	<1		12	<1		0.15
PKS-P-ALD-19	GRAB	ALD Pot, Beach WR, tap in hall	16-Nov-10	0.1	<1		12	<1		0.1
PKS-P-ALD-19	GRAB	ALD Pot, Beach WR, tap in hall	22-Nov-10	0.89	<1		9.6	<1		0.23
PKS-P-ALD-19	GRAB	ALD Pot, Beach WR, tap in hall	30-Nov-10	1.1	<1		8.1	<1		0.23
PKS-P-ALD-19	GRAB	ALD Pot, Beach WR, tap in hall	6-Dec-10	0.99	<1		8.7	<1		0.52
PKS-P-ALD-19	GRAB	ALD Pot, Beach WR, tap in hall	14-Dec-10	0.95	<1		7.2	<1		0.28
PKS-P-ALD-19	GRAB	ALD Pot, Beach WR, tap in hall	20-Dec-10	0.81	<1		8.5	<1		0.24
PKS-P-ALD-19	GRAB	ALD Pot, Beach WR, tap in hall	31-Dec-10	1.1	<1		5.4	<1		0.31
PKS-P-ALD-21	GRAB	ALD Pot, Beach East, standpipe	4-Jan-10	0.09	<1		6.7	<1		0.31
PKS-P-ALD-21	GRAB	ALD Pot, Beach East, standpipe	14-Jan-10	0.05	<1		7.5	<1		0.32
PKS-P-ALD-21	GRAB	ALD Pot, Beach East, standpipe	21-Jan-10	0.06	<1		7.5	<1		0.98
PKS-P-ALD-21	GRAB	ALD Pot, Beach East, standpipe	28-Jan-10	0.07	<1		9.9	<1		0.41
PKS-P-ALD-21	GRAB	ALD Pot, Beach East, standpipe	1-Feb-10	0.06	<1		8.1	<1		0.71
PKS-P-ALD-21	GRAB	ALD Pot, Beach East, standpipe	10-Feb-10	0.15	<1		8.5	<1		0.7
PKS-P-ALD-21	GRAB	ALD Pot, Beach East, standpipe	15-Feb-10	0.1	<1		8.6	<1		0.9
PKS-P-ALD-21	GRAB	ALD Pot, Beach East, standpipe	23-Feb-10	0.09	<1		9	<1		1.9
PKS-P-ALD-21	GRAB	ALD Pot, Beach East, standpipe	1-Mar-10	0.14	<1		8.2	<1		1.5
PKS-P-ALD-21	GRAB	ALD Pot, Beach East, standpipe	10-Mar-10	0.03	<1		8.1	<1		0.21
PKS-P-ALD-21	GRAB	ALD Pot, Beach East, standpipe	11-Mar-10	0.04	<1		8.2	<1		0.26
PKS-P-ALD-21	GRAB	ALD Pot, Beach East, standpipe	12-Mar-10	0.05	<1		8.1	<1		0.25
PKS-P-ALD-21	GRAB	ALD Pot, Beach East, standpipe	16-Mar-10	0.03	<1		8.1	<1		0.26
PKS-P-ALD-21	GRAB	ALD Pot, Beach East, standpipe	22-Mar-10	0.05	<1		9.3	<1		0.16
PKS-P-ALD-21	GRAB	ALD Pot, Beach East, standpipe	29-Mar-10	0.03	<1		8.8	<1		0.18
PKS-P-ALD-21	GRAB	ALD Pot, Beach East, standpipe	7-Apr-10	0.09	<1		8.4	<1		0.14
PKS-P-ALD-21	GRAB	ALD Pot, Beach East, standpipe	14-Apr-10	0.07	<1		8.4	<1		0.16
PKS-P-ALD-21	GRAB	ALD Pot, Beach East, standpipe	20-Apr-10	0.1	<1		9.8	<1		0.31
PKS-P-ALD-21	GRAB	ALD Pot, Beach East, standpipe	27-Apr-10	<0.01	<1		10	<1		0.3

Sampling point	Sample type	Sample reported name	Sampled date	Chlorine Free mg/L	Ecoli MF/100 mLS	Ecoli MPN/100 mLS	Temp °C	Total Coliform MF/100mLS	Total Coliform MPN/100mLS	Turbidity NTU
PKS-P-ALD-21	GRAB	ALD Pot, Beach East, standpipe	4-May-10	0.06	<1		11	<1		0.15
PKS-P-ALD-21	GRAB	ALD Pot, Beach East, standpipe	12-May-10	0.05	<1		10	<1		0.34
PKS-P-ALD-21	GRAB	ALD Pot, Beach East, standpipe	18-May-10	0.09	<1		11	<1		0.34
PKS-P-ALD-21	GRAB	ALD Pot, Beach East, standpipe	27-May-10	0.11	<1		12	<1		0.68
PKS-P-ALD-21	GRAB	ALD Pot, Beach East, standpipe	2-Jun-10	0.05	<1		12	<1		0.37
PKS-P-ALD-21	GRAB	ALD Pot, Beach East, standpipe	8-Jun-10	0.08	<1		12	<1		0.62
PKS-P-ALD-21	GRAB	ALD Pot, Beach East, standpipe	15-Jun-10	8.2	<1		12	<1		0.35
PKS-P-ALD-21	GRAB	ALD Pot, Beach East, standpipe	22-Jun-10	0.95	<1		14	<1		0.57
PKS-P-ALD-21	GRAB	ALD Pot, Beach East, standpipe	28-Jun-10	1.6	<1		15	<1		1.1
PKS-P-ALD-21	GRAB	ALD Pot, Beach East, standpipe	6-Jul-10	1.6	<1		15	<1		0.3
PKS-P-ALD-21	GRAB	ALD Pot, Beach East, standpipe	13-Jul-10	1.3	<1		14	<1		0.52
PKS-P-ALD-21	GRAB	ALD Pot, Beach East, standpipe	19-Jul-10	1.1	<1		15	<1		0.52
PKS-P-ALD-21	GRAB	ALD Pot, Beach East, standpipe	28-Jul-10	0.85	<1		16	<1		0.34
PKS-P-ALD-21	GRAB	ALD Pot, Beach East, standpipe	4-Aug-10	0.04	<1		15	<1		0.14
PKS-P-ALD-21	GRAB	ALD Pot, Beach East, standpipe	10-Aug-10	0.04	<1		16	<1		0.21
PKS-P-ALD-21	GRAB	ALD Pot, Beach East, standpipe	18-Aug-10	1.8	<1		15	<1		0.21
PKS-P-ALD-21	GRAB	ALD Pot, Beach East, standpipe	24-Aug-10	1.4	<1		14	<1		0.19
PKS-P-ALD-21	GRAB	ALD Pot, Beach East, standpipe	30-Aug-10	1.1	<1		18	<1		0.13
PKS-P-ALD-21	GRAB	ALD Pot, Beach East, standpipe	9-Sep-10	0.97	<1		18	<1		0.14
PKS-P-ALD-21	GRAB	ALD Pot, Beach East, standpipe	14-Sep-10	0.97	<1		14	<1		0.12
PKS-P-ALD-21	GRAB	ALD Pot, Beach East, standpipe	21-Sep-10	0.89	<1		15	<1		0.15
PKS-P-ALD-21	GRAB	ALD Pot, Beach East, standpipe	28-Sep-10	0.05	<1		16	<1		0.07
PKS-P-ALD-21	GRAB	ALD Pot, Beach East, standpipe	5-Oct-10	1.4	<1		16	<1		0.18
PKS-P-ALD-21	GRAB	ALD Pot, Beach East, standpipe	12-Oct-10	1.4	<1		15	<1		0.2
PKS-P-ALD-21	GRAB	ALD Pot, Beach East, standpipe	19-Oct-10	1	<1		14	<1		0.33
PKS-P-ALD-21	GRAB	ALD Pot, Beach East, standpipe	26-Oct-10	0.96	<1		12	<1		0.2
PKS-P-ALD-21	GRAB	ALD Pot, Beach East, standpipe	3-Nov-10	0.61	<1		12	<1		0.19
PKS-P-ALD-21	GRAB	ALD Pot, Beach East, standpipe	9-Nov-10	0.12	<1		12	<1		0.17
PKS-P-ALD-21	GRAB	ALD Pot, Beach East, standpipe	16-Nov-10	0.05	<1		11	<1		0.17
PKS-P-ALD-21	GRAB	ALD Pot, Beach East, standpipe	22-Nov-10	<0.01	<1		9	<1		0.11
PKS-P-BEL-10	GRAB	BEL PC, Caretaker, hose bib	13-Jan-10	0.98	<1		8.7	<1		0.3
PKS-P-BEL-10	GRAB	BEL PC, Caretaker, hose bib	20-Jan-10	0.74	<1		8	<1		0.5
PKS-P-BEL-10	GRAB	BEL PC, Caretaker, hose bib	27-Jan-10	1.7	<1		7.9	<1		0.23
PKS-P-BEL-10	GRAB	BEL PC, Caretaker, hose bib	2-Feb-10	1.6	<1		8.7	<1		0.24
PKS-P-BEL-10	GRAB	BEL PC, Caretaker, hose bib	9-Feb-10	0.57	<1		8.9	<1		0.18
PKS-P-BEL-10	GRAB	BEL PC, Caretaker, hose bib	16-Feb-10	1.6	<1		11	<1		0.22
PKS-P-BEL-10	GRAB	BEL PC, Caretaker, hose bib	24-Feb-10	1.6	<1		7.2	<1		0.25
PKS-P-BEL-10	GRAB	BEL PC, Caretaker, hose bib	2-Mar-10	1.1	<1		8	<1		0.19
PKS-P-BEL-10	GRAB	BEL PC, Caretaker, hose bib	9-Mar-10	0.89	<1		7.7	<1		0.15
PKS-P-BEL-10	GRAB	BEL PC, Caretaker, hose bib	17-Mar-10	0.38	<1		8.4	<1		0.16
PKS-P-BEL-10	GRAB	BEL PC, Caretaker, hose bib	23-Mar-10	0.43	<1		11	<1		0.2
PKS-P-BEL-10	GRAB	BEL PC, Caretaker, hose bib	30-Mar-10	0.73	<1		8.7	<1		0.3
PKS-P-BEL-10	GRAB	BEL PC, Caretaker, hose bib	9-Apr-10	0.33	<1		8	<1		0.25
PKS-P-BEL-10	GRAB	BEL PC, Caretaker, hose bib	13-Apr-10	0.41	<1		8.4	<1		0.31
PKS-P-BEL-10	GRAB	BEL PC, Caretaker, hose bib	20-Apr-10	0.33	<1		14	<1		0.31
PKS-P-BEL-10	GRAB	BEL PC, Caretaker, hose bib	26-Apr-10	0.4	<1		12	<1		0.31
PKS-P-BEL-10	GRAB	BEL PC, Caretaker, hose bib	5-May-10	0.35	<1		10	<1		0.34
PKS-P-BEL-10	GRAB	BEL PC, Caretaker, hose bib	11-May-10	0.33	<1		10	<1		0.5
PKS-P-BEL-10	GRAB	BEL PC, Caretaker, hose bib	18-May-10	0.31	<1		13	<1		0.35
PKS-P-BEL-10	GRAB	BEL PC, Caretaker, hose bib	28-May-10	0.41	<1		12	<1		0.36
PKS-P-BEL-10	GRAB	BEL PC, Caretaker, hose bib	1-Jun-10	0.41	<1		13	<1		0.35
PKS-P-BEL-10	GRAB	BEL PC, Caretaker, hose bib	8-Jun-10	0.43	<1		10	<1		0.35
PKS-P-BEL-10	GRAB	BEL PC, Caretaker, hose bib	15-Jun-10	0.29	<1		15	<1		0.33
PKS-P-BEL-10	GRAB	BEL PC, Caretaker, hose bib	22-Jun-10	0.39	<1		13	<1		0.33
PKS-P-BEL-10	GRAB	BEL PC, Caretaker, hose bib	2-Jul-10	1.7	<1		15	<1		0.34
PKS-P-BEL-10	GRAB	BEL PC, Caretaker, hose bib	6-Jul-10	1.7	<1		14	<1		0.41
PKS-P-BEL-10	GRAB	BEL PC, Caretaker, hose bib	14-Jul-10	1	<1		16	<1		0.35
PKS-P-BEL-10	GRAB	BEL PC, Caretaker, hose bib	19-Jul-10	0.84	<1		13	<1		0.2
PKS-P-BEL-10	GRAB	BEL PC, Caretaker, hose bib	28-Jul-10	2	<1		17	<1		0.38
PKS-P-BEL-10	GRAB	BEL PC, Caretaker, hose bib	4-Aug-10	1.6	<1		20	<1		0.21
PKS-P-BEL-10	GRAB	BEL PC, Caretaker, hose bib	9-Aug-10	1.2	<1		18	<1		0.25
PKS-P-BEL-10	GRAB	BEL PC, Caretaker, hose bib	18-Aug-10	0.77	<1		18	<1		0.28
PKS-P-BEL-10	GRAB	BEL PC, Caretaker, hose bib	24-Aug-10	0.51	<1		19	<1		0.24
PKS-P-BEL-10	GRAB	BEL PC, Caretaker, hose bib	30-Aug-10	0.37	<1		16	<1		0.24
PKS-P-BEL-10	GRAB	BEL PC, Caretaker, hose bib	9-Sep-10	0.3	<1		16	<1		0.21
PKS-P-BEL-10	GRAB	BEL PC, Caretaker, hose bib	14-Sep-10	0.16	<1		16	<1		0.23
PKS-P-BEL-10	GRAB	BEL PC, Caretaker, hose bib	21-Sep-10	0.56	<1		15	<1		0.21
PKS-P-BEL-10	GRAB	BEL PC, Caretaker, hose bib	28-Sep-10	0.19	<1		15	<1		0.2
PKS-P-BEL-10	GRAB	BEL PC, Caretaker, hose bib	5-Oct-10	7.9	<1		15	<1		0.28
PKS-P-BEL-10	GRAB	BEL PC, Caretaker, hose bib	12-Oct-10	1.3	<1		14	<1		0.29
PKS-P-BEL-10	GRAB	BEL PC, Caretaker, hose bib	19-Oct-10	1.6	<1		12	<1		0.31
PKS-P-BEL-10	GRAB	BEL PC, Caretaker, hose bib	26-Oct-10	1.1	<1		13	<1		0.21
PKS-P-BEL-10	GRAB	BEL PC, Caretaker, hose bib	1-Nov-10	0.99	<1		13	<1		0.38
PKS-P-BEL-10	GRAB	BEL PC, Caretaker, hose bib	9-Nov-10	0.81	<1		11	<1		0.26
PKS-P-BEL-10	GRAB	BEL PC, Caretaker, hose bib	15-Nov-10	0.97	<1		9.6	<1		0.26

Sampling point	Sample type	Sample reported name	Sampled date	Chlorine Free mg/L	Ecoli MF/100 mLs	Ecoli MPN/100 mLs	Temp °C	Total Coliform MF/100mLs	Total Coliform MPN/100mLs	Turbidity NTU
PKS-P-BEL-10	GRAB	BEL PC, Caretaker, hose bib	22-Nov-10	0.85	<1		7.5	<1		0.26
PKS-P-BEL-10	GRAB	BEL PC, Caretaker, hose bib	29-Nov-10	0.39	<1		6.9	<1		0.29
PKS-P-BEL-10	GRAB	BEL PC, Caretaker, hose bib	6-Dec-10	0.43	<1		6.3	<1		0.39
PKS-P-BEL-10	GRAB	BEL PC, Caretaker, hose bib	13-Dec-10	0.44	<1		7.9	<1		0.39
PKS-P-BEL-10	GRAB	BEL PC, Caretaker, hose bib	20-Dec-10	0.44	<1		8.1	<1		0.33
PKS-P-BEL-10	GRAB	BEL PC, Caretaker, hose bib	31-Dec-10	0.33	<1		6.1	<1		0.49
PKS-P-BEL-16	GRAB	BEL PC, CL Shed, tap on 150mm	13-Jan-10	0.54	<1		7.7	<1		0.24
PKS-P-BEL-16	GRAB	BEL PC, CL Shed, tap on 150mm	20-Jan-10	0.51	<1		7	<1		0.2
PKS-P-BEL-16	GRAB	BEL PC, CL Shed, tap on 150mm	27-Jan-10	0.47	<1		7.9	<1		0.18
PKS-P-BEL-16	GRAB	BEL PC, CL Shed, tap on 150mm	2-Feb-10	0.72	<1		8.1	<1		0.23
PKS-P-BEL-16	GRAB	BEL PC, CL Shed, tap on 150mm	9-Feb-10	0.5	<1		8.1	<1		0.2
PKS-P-BEL-16	GRAB	BEL PC, CL Shed, tap on 150mm	16-Feb-10	0.47	<1		8.4	<1		0.27
PKS-P-BEL-16	GRAB	BEL PC, CL Shed, tap on 150mm	24-Feb-10	0.24	<1		7	<1		0.23
PKS-P-BEL-16	GRAB	BEL PC, CL Shed, tap on 150mm	2-Mar-10	0.24	<1		7.9	<1		0.26
PKS-P-BEL-16	GRAB	BEL PC, CL Shed, tap on 150mm	9-Mar-10	0.49	<1		8.7	<1		0.22
PKS-P-BEL-16	GRAB	BEL PC, CL Shed, tap on 150mm	17-Mar-10	0.4	<1		7.6	<1		0.25
PKS-P-BEL-16	GRAB	BEL PC, CL Shed, tap on 150mm	23-Mar-10	0.38	<1		8.2	<1		0.29
PKS-P-BEL-16	GRAB	BEL PC, CL Shed, tap on 150mm	30-Mar-10	0.42	<1		7.8	<1		0.31
PKS-P-BEL-16	GRAB	BEL PC, CL Shed, tap on 150mm	9-Apr-10	0.45	<1		7.7	<1		0.43
PKS-P-BEL-16	GRAB	BEL PC, CL Shed, tap on 150mm	13-Apr-10	0.39	<1		7.8	<1		0.28
PKS-P-BEL-16	GRAB	BEL PC, CL Shed, tap on 150mm	20-Apr-10	0.39	<1		8.6	<1		0.43
PKS-P-BEL-16	GRAB	BEL PC, CL Shed, tap on 150mm	26-Apr-10	0.36	<1		8.8	<1		0.4
PKS-P-BEL-16	GRAB	BEL PC, CL Shed, tap on 150mm	5-May-10	0.3	<1		8.6	<1		0.42
PKS-P-BEL-16	GRAB	BEL PC, CL Shed, tap on 150mm	11-May-10	0.32	<1		8.9	<1		0.54
PKS-P-BEL-16	GRAB	BEL PC, CL Shed, tap on 150mm	18-May-10	0.34	<1		12	<1		0.64
PKS-P-BEL-16	GRAB	BEL PC, CL Shed, tap on 150mm	28-May-10	0.35	<1		12	<1		0.54
PKS-P-BEL-16	GRAB	BEL PC, CL Shed, tap on 150mm	1-Jun-10	0.35	<1		11	<1		0.48
PKS-P-BEL-16	GRAB	BEL PC, CL Shed, tap on 150mm	8-Jun-10	0.27	<1		11	<1		0.55
PKS-P-BEL-16	GRAB	BEL PC, CL Shed, tap on 150mm	15-Jun-10	0.16	<1		15	<1		0.51
PKS-P-BEL-16	GRAB	BEL PC, CL Shed, tap on 150mm	22-Jun-10	0.13	<1		13	<1		0.46
PKS-P-BEL-16	GRAB	BEL PC, CL Shed, tap on 150mm	2-Jul-10	0.89	<1		12	<1		0.45
PKS-P-BEL-16	GRAB	BEL PC, CL Shed, tap on 150mm	6-Jul-10	1.2	<1		16	<1		0.59
PKS-P-BEL-16	GRAB	BEL PC, CL Shed, tap on 150mm	14-Jul-10	0.95	<1		17	<1		0.57
PKS-P-BEL-16	GRAB	BEL PC, CL Shed, tap on 150mm	19-Jul-10	0.57	<1		14	<1		0.42
PKS-P-BEL-16	GRAB	BEL PC, CL Shed, tap on 150mm	28-Jul-10	2.2	<1		15	<1		0.62
PKS-P-BEL-16	GRAB	BEL PC, CL Shed, tap on 150mm	4-Aug-10	1.6	<1		17	<1		0.38
PKS-P-BEL-16	GRAB	BEL PC, CL Shed, tap on 150mm	9-Aug-10	1.1	<1		16	<1		0.35
PKS-P-BEL-16	GRAB	BEL PC, CL Shed, tap on 150mm	18-Aug-10	0.74	<1		16	<1		0.34
PKS-P-BEL-16	GRAB	BEL PC, CL Shed, tap on 150mm	24-Aug-10	0.53	<1		15	<1		0.4
PKS-P-BEL-16	GRAB	BEL PC, CL Shed, tap on 150mm	30-Aug-10	0.33	<1		15	<1		0.36
PKS-P-BEL-16	GRAB	BEL PC, CL Shed, tap on 150mm	9-Sep-10	0.15	<1		16	<1		0.37
PKS-P-BEL-16	GRAB	BEL PC, CL Shed, tap on 150mm	14-Sep-10	0.17	<1		13	<1		0.33
PKS-P-BEL-16	GRAB	BEL PC, CL Shed, tap on 150mm	21-Sep-10	0.17	<1		15	<1		0.4
PKS-P-BEL-16	GRAB	BEL PC, CL Shed, tap on 150mm	28-Sep-10	0.35	<1		13	<1		0.33
PKS-P-BEL-16	GRAB	BEL PC, CL Shed, tap on 150mm	5-Oct-10	8.8	<1		17	<1		0.46
PKS-P-BEL-16	GRAB	BEL PC, CL Shed, tap on 150mm	12-Oct-10	1.3	<1		13	<1		0.45
PKS-P-BEL-16	GRAB	BEL PC, CL Shed, tap on 150mm	19-Oct-10	0.86	<1		12	<1		0.43
PKS-P-BEL-16	GRAB	BEL PC, CL Shed, tap on 150mm	26-Oct-10	0.87	<1		12	<1		0.29
PKS-P-BEL-16	GRAB	BEL PC, CL Shed, tap on 150mm	1-Nov-10	0.64	<1		11	<1		0.37
PKS-P-BEL-16	GRAB	BEL PC, CL Shed, tap on 150mm	9-Nov-10	0.75	<1		11	<1		0.32
PKS-P-BEL-16	GRAB	BEL PC, CL Shed, tap on 150mm	15-Nov-10	0.55	<1		10	<1		0.38
PKS-P-BEL-16	GRAB	BEL PC, CL Shed, tap on 150mm	22-Nov-10	0.38	<1		8.7	<1		0.43
PKS-P-BEL-16	GRAB	BEL PC, CL Shed, tap on 150mm	29-Nov-10	0.57	<1		6.9	<1		0.43
PKS-P-BEL-16	GRAB	BEL PC, CL Shed, tap on 150mm	6-Dec-10	0.44	<1		6.8	<1		0.46
PKS-P-BEL-16	GRAB	BEL PC, CL Shed, tap on 150mm	13-Dec-10	0.44	<1		7.6	<1		0.34
PKS-P-BEL-16	GRAB	BEL PC, CL Shed, tap on 150mm	20-Dec-10	0.4	<1		7.7	<1		0.49
PKS-P-BEL-16	GRAB	BEL PC, CL Shed, tap on 150mm	31-Dec-10	0.26	<1		6	<1		0.53
PKS-P-BEL-23	GRAB	BEL PC, Interpretive center sink tap	20-Jan-10	0.6	<1		9.5	<1		1.9
PKS-P-BEL-23	GRAB	BEL PC, Interpretive center sink tap	9-Feb-10	0.5	<1		11	<1		0.41
PKS-P-BEL-23	GRAB	BEL PC, Interpretive center sink tap	16-Feb-10	1.6	<1		11	<1		0.28
PKS-P-BEL-23	GRAB	BEL PC, Interpretive center sink tap	24-Feb-10	1.7	<1		7.2	<1		0.88
PKS-P-BEL-23	GRAB	BEL PC, Interpretive center sink tap	2-Mar-10	1.8	<1		10	<1		0.54
PKS-P-BEL-23	GRAB	BEL PC, Interpretive center sink tap	9-Mar-10	0.6	<1		10	<1		0.27
PKS-P-BEL-23	GRAB	BEL PC, Interpretive center sink tap	17-Mar-10	0.84	<1		11	<1		0.18
PKS-P-BEL-23	GRAB	BEL PC, Interpretive center sink tap	23-Mar-10	0.71	<1		8.9	<1		0.62
PKS-P-BEL-23	GRAB	BEL PC, Interpretive center sink tap	30-Mar-10	0.53	<1		10	<1		0.72
PKS-P-BEL-23	GRAB	BEL PC, Interpretive center sink tap	9-Apr-10	0.53	<1		9.1	<1		1.3
PKS-P-BEL-23	GRAB	BEL PC, Interpretive center sink tap	13-Apr-10	0.4	<1		11	<1		0.49
PKS-P-BEL-23	GRAB	BEL PC, Interpretive center sink tap	20-Apr-10	0.38	<1		13	<1		0.33
PKS-P-BEL-23	GRAB	BEL PC, Interpretive center sink tap	26-Apr-10	0.33	<1		13	<1		0.37
PKS-P-BEL-23	GRAB	BEL PC, Interpretive center sink tap	5-May-10	0.36	<1		11	<1		0.42
PKS-P-BEL-23	GRAB	BEL PC, Interpretive center sink tap	11-May-10	0.39	<1		12	<1		0.38
PKS-P-BEL-23	GRAB	BEL PC, Interpretive center sink tap	18-May-10	0.37	<1		14	<1		0.56
PKS-P-BEL-23	GRAB	BEL PC, Interpretive center sink tap	28-May-10	0.39	<1		13	<1		0.38
PKS-P-BEL-23	GRAB	BEL PC, Interpretive center sink tap	1-Jun-10	0.44	<1		12	<1		0.34

Sampling point	Sample type	Sample reported name	Sampled date	Chlorine Free mg/L	Ecoli MF/100 mLS	Ecoli MPN/100 mLS	Temp °C	Total Coliform MF/100mLS	Total Coliform MPN/100mLS	Turbidity NTU
PKS-P-BEL-23	GRAB	BEL PC, Interpretive center sink tap	8-Jun-10	0.33	<1		11	<1		0.52
PKS-P-BEL-23	GRAB	BEL PC, Interpretive center sink tap	15-Jun-10	0.25	<1		16	<1		0.39
PKS-P-BEL-23	GRAB	BEL PC, Interpretive center sink tap	22-Jun-10	0.41	<1		16	<1		0.53
PKS-P-BEL-23	GRAB	BEL PC, Interpretive center sink tap	2-Jul-10	1.8	<1		13	<1		0.4
PKS-P-BEL-23	GRAB	BEL PC, Interpretive center sink tap	6-Jul-10	1.8	<1		16	<1		0.4
PKS-P-BEL-23	GRAB	BEL PC, Interpretive center sink tap	14-Jul-10	0.95	<1		18	<1		0.43
PKS-P-BEL-23	GRAB	BEL PC, Interpretive center sink tap	19-Jul-10	0.64	<1		17	<1		0.59
PKS-P-BEL-23	GRAB	BEL PC, Interpretive center sink tap	28-Jul-10	2	<1		18	<1		0.45
PKS-P-BEL-23	GRAB	BEL PC, Interpretive center sink tap	4-Aug-10	1.7	<1		20	<1		0.29
PKS-P-BEL-23	GRAB	BEL PC, Interpretive center sink tap	9-Aug-10	1.2	<1		19	<1		0.27
PKS-P-BEL-23	GRAB	BEL PC, Interpretive center sink tap	18-Aug-10	0.81	<1		19	<1		0.26
PKS-P-BEL-23	GRAB	BEL PC, Interpretive center sink tap	24-Aug-10	0.57	<1		17	<1		0.3
PKS-P-BEL-23	GRAB	BEL PC, Interpretive center sink tap	30-Aug-10	0.42	<1		18	<1		0.27
PKS-P-BEL-23	GRAB	BEL PC, Interpretive center sink tap	9-Sep-10	0.58	<1		18	<1		0.26
PKS-P-BEL-23	GRAB	BEL PC, Interpretive center sink tap	14-Sep-10	0.2	<1		16	<1		0.24
PKS-P-BEL-23	GRAB	BEL PC, Interpretive center sink tap	21-Sep-10	0.65	<1		17	<1		0.38
PKS-P-BEL-23	GRAB	BEL PC, Interpretive center sink tap	28-Sep-10	0.31	<1		17	<1		0.27
PKS-P-BEL-23	GRAB	BEL PC, Interpretive center sink tap	5-Oct-10	8.2	<1		17	<1		0.42
PKS-P-BEL-23	GRAB	BEL PC, Interpretive center sink tap	12-Oct-10	1.5	<1		15	<1		0.39
PKS-P-BEL-23	GRAB	BEL PC, Interpretive center sink tap	19-Oct-10	1.6	<1		12	<1		0.66
PKS-P-BEL-23	GRAB	BEL PC, Interpretive center sink tap	26-Oct-10	1.4	<1		13	<1		0.26
PKS-P-BEL-23	GRAB	BEL PC, Interpretive center sink tap	1-Nov-10	1.2	<1		12	<1		0.34
PKS-P-BEL-23	GRAB	BEL PC, Interpretive center sink tap	9-Nov-10	0.93	<1		11	<1		0.29
PKS-P-BEL-23	GRAB	BEL PC, Interpretive center sink tap	15-Nov-10	0.97	<1		11	<1		0.34
PKS-P-BEL-23	GRAB	BEL PC, Interpretive center sink tap	22-Nov-10	0.69	<1		8.6	<1		0.27
PKS-P-BEL-23	GRAB	BEL PC, Interpretive center sink tap	29-Nov-10	0.49	<1		6.8	<1		0.32
PKS-P-BEL-23	GRAB	BEL PC, Interpretive center sink tap	6-Dec-10	0.43	<1		7	<1		0.41
PKS-P-BEL-23	GRAB	BEL PC, Interpretive center sink tap	13-Dec-10	0.62	<1		7.7	<1		0.29
PKS-P-BEL-23	GRAB	BEL PC, Interpretive center sink tap	20-Dec-10	0.57	<1		7.8	<1		0.37
PKS-P-BEL-23	GRAB	BEL PC, Interpretive center sink tap	31-Dec-10	0.34	<1		5.9	<1		0.52
PKS-P-BEL-24	GRAB	BEL PC, Service bldg, first aid room tap	13-Jan-10	0.91						
PKS-P-BEL-24	GRAB	BEL PC, Service bldg, first aid room tap	20-Jan-10	0.76						
PKS-P-BEL-24	GRAB	BEL PC, Service bldg, first aid room tap	27-Jan-10	2						
PKS-P-BEL-24	GRAB	BEL PC, Service bldg, first aid room tap	2-Feb-10	2.2						
PKS-P-BEL-24	GRAB	BEL PC, Service bldg, first aid room tap	9-Feb-10	1.9						
PKS-P-BEL-24	GRAB	BEL PC, Service bldg, first aid room tap	16-Feb-10	1.7						
PKS-P-BEL-24	GRAB	BEL PC, Service bldg, first aid room tap	24-Feb-10	0.89						
PKS-P-BEL-24	GRAB	BEL PC, Service bldg, first aid room tap	2-Mar-10	0.93						
PKS-P-BEL-24	GRAB	BEL PC, Service bldg, first aid room tap	9-Mar-10	0.58						
PKS-P-BEL-24	GRAB	BEL PC, Service bldg, first aid room tap	17-Mar-10	0.82						
PKS-P-BEL-24	GRAB	BEL PC, Service bldg, first aid room tap	23-Mar-10	0.42						
PKS-P-BEL-24	GRAB	BEL PC, Service bldg, first aid room tap	30-Mar-10	1.8						
PKS-P-BEL-24	GRAB	BEL PC, Service bldg, first aid room tap	9-Apr-10	0.53						
PKS-P-BEL-24	GRAB	BEL PC, Service bldg, first aid room tap	13-Apr-10	0.34						
PKS-P-BEL-24	GRAB	BEL PC, Service bldg, first aid room tap	20-Apr-10	0.43						
PKS-P-BEL-24	GRAB	BEL PC, Service bldg, first aid room tap	26-Apr-10	0.32						
PKS-P-BEL-24	GRAB	BEL PC, Service bldg, first aid room tap	5-May-10	0.49						
PKS-P-BEL-24	GRAB	BEL PC, Service bldg, first aid room tap	11-May-10	0.42						
PKS-P-BEL-24	GRAB	BEL PC, Service bldg, first aid room tap	18-May-10	0.4						
PKS-P-BEL-24	GRAB	BEL PC, Service bldg, first aid room tap	28-May-10	0.49						
PKS-P-BEL-24	GRAB	BEL PC, Service bldg, first aid room tap	1-Jun-10	0.38						
PKS-P-BEL-24	GRAB	BEL PC, Service bldg, first aid room tap	8-Jun-10	0.29						
PKS-P-BEL-24	GRAB	BEL PC, Service bldg, first aid room tap	15-Jun-10	0.16						
PKS-P-BEL-24	GRAB	BEL PC, Service bldg, first aid room tap	22-Jun-10	0.67						
PKS-P-BEL-24	GRAB	BEL PC, Service bldg, first aid room tap	2-Jul-10	0.88						
PKS-P-BEL-24	GRAB	BEL PC, Service bldg, first aid room tap	6-Jul-10	1.6						
PKS-P-BEL-24	GRAB	BEL PC, Service bldg, first aid room tap	14-Jul-10	0.99						
PKS-P-BEL-24	GRAB	BEL PC, Service bldg, first aid room tap	19-Jul-10	0.64						
PKS-P-BEL-24	GRAB	BEL PC, Service bldg, first aid room tap	28-Jul-10	2.2						
PKS-P-BEL-24	GRAB	BEL PC, Service bldg, first aid room tap	4-Aug-10	0.64						
PKS-P-BEL-24	GRAB	BEL PC, Service bldg, first aid room tap	9-Aug-10	1.4						
PKS-P-BEL-24	GRAB	BEL PC, Service bldg, first aid room tap	18-Aug-10	0.82						
PKS-P-BEL-24	GRAB	BEL PC, Service bldg, first aid room tap	24-Aug-10	0.57						
PKS-P-BEL-24	GRAB	BEL PC, Service bldg, first aid room tap	30-Aug-10	0.74						
PKS-P-BEL-24	GRAB	BEL PC, Service bldg, first aid room tap	9-Sep-10	0.24						
PKS-P-BEL-24	GRAB	BEL PC, Service bldg, first aid room tap	14-Sep-10	0.16						
PKS-P-BEL-24	GRAB	BEL PC, Service bldg, first aid room tap	21-Sep-10	0.23						
PKS-P-BEL-24	GRAB	BEL PC, Service bldg, first aid room tap	28-Sep-10	0.18						
PKS-P-BEL-24	GRAB	BEL PC, Service bldg, first aid room tap	5-Oct-10	8.8						
PKS-P-BEL-24	GRAB	BEL PC, Service bldg, first aid room tap	12-Oct-10	1.6						
PKS-P-BEL-24	GRAB	BEL PC, Service bldg, first aid room tap	19-Oct-10	1.3						
PKS-P-BEL-24	GRAB	BEL PC, Service bldg, first aid room tap	26-Oct-10	1.6						
PKS-P-BEL-24	GRAB	BEL PC, Service bldg, first aid room tap	1-Nov-10	1						
PKS-P-BEL-24	GRAB	BEL PC, Service bldg, first aid room tap	9-Nov-10	1.4						
PKS-P-BEL-24	GRAB	BEL PC, Service bldg, first aid room tap	15-Nov-10	0.97						

Sampling point	Sample type	Sample reported name	Sampled date	Chlorine Free mg/L	Ecoli MF/100 mLs	Ecoli MPN/100 mLs	Temp °C	Total Coliform MF/100mLs	Total Coliform MPN/100mLs	Turbidity NTU
PKS-P-BEL-24	GRAB	BEL PC, Service bldg, first aid room tap	22-Nov-10	0.74						
PKS-P-BEL-24	GRAB	BEL PC, Service bldg, first aid room tap	29-Nov-10	0.5						
PKS-P-BEL-24	GRAB	BEL PC, Service bldg, first aid room tap	6-Dec-10	0.74						
PKS-P-BEL-24	GRAB	BEL PC, Service bldg, first aid room tap	13-Dec-10	0.61						
PKS-P-BEL-24	GRAB	BEL PC, Service bldg, first aid room tap	20-Dec-10	0.37						
PKS-P-BEL-24	GRAB	BEL PC, Service bldg, first aid room tap	31-Dec-10	0.43						
PKS-P-BEL-53	GRAB	BEL WP, Bldg #1, first aid room tap	5-Jan-10	0.22	<1		7.3	<1		0.18
PKS-P-BEL-53	GRAB	BEL WP, Bldg #1, first aid room tap	13-Jan-10	0.16	<1		7.9	<1		0.12
PKS-P-BEL-53	GRAB	BEL WP, Bldg #1, first aid room tap	20-Jan-10	0.18	<1		7	<1		0.27
PKS-P-BEL-53	GRAB	BEL WP, Bldg #1, first aid room tap	27-Jan-10	0.24	<1		9.4	<1		0.13
PKS-P-BEL-53	GRAB	BEL WP, Bldg #1, first aid room tap	2-Feb-10	0.25	<1		8.9	<1		0.16
PKS-P-BEL-53	GRAB	BEL WP, Bldg #1, first aid room tap	9-Feb-10	0.17	<1		8.8	<1		0.18
PKS-P-BEL-53	GRAB	BEL WP, Bldg #1, first aid room tap	16-Feb-10	0.2	<1		8.9	<1		0.22
PKS-P-BEL-53	GRAB	BEL WP, Bldg #1, first aid room tap	24-Feb-10	0.2	<1		8.6	<1		0.15
PKS-P-BEL-53	GRAB	BEL WP, Bldg #1, first aid room tap	2-Mar-10	0.17	<1		9	<1		0.23
PKS-P-BEL-53	GRAB	BEL WP, Bldg #1, first aid room tap	9-Mar-10	0.28	<1		9.1	<1		0.11
PKS-P-BEL-53	GRAB	BEL WP, Bldg #1, first aid room tap	17-Mar-10	0.15	<1		8.6	<1		0.12
PKS-P-BEL-53	GRAB	BEL WP, Bldg #1, first aid room tap	23-Mar-10	0.16	<1		9.1	<1		0.13
PKS-P-BEL-53	GRAB	BEL WP, Bldg #1, first aid room tap	30-Mar-10	0.17	<1		9.3	<1		0.12
PKS-P-BEL-53	GRAB	BEL WP, Bldg #1, first aid room tap	9-Apr-10	0.16	<1		9.1	<1		0.2
PKS-P-BEL-53	GRAB	BEL WP, Bldg #1, first aid room tap	13-Apr-10	0.15	<1		9	<1		0.2
PKS-P-BEL-53	GRAB	BEL WP, Bldg #1, first aid room tap	20-Apr-10	0.05	<1		9.3	<1		0.15
PKS-P-BEL-53	GRAB	BEL WP, Bldg #1, first aid room tap	26-Apr-10	0.06	<1		12	<1		0.22
PKS-P-BEL-53	GRAB	BEL WP, Bldg #1, first aid room tap	5-May-10	0.09	<1		11	<1		0.09
PKS-P-BEL-53	GRAB	BEL WP, Bldg #1, first aid room tap	11-May-10	0.07	<1		9.1	<1		0.12
PKS-P-BEL-53	GRAB	BEL WP, Bldg #1, first aid room tap	18-May-10	0.14	<1		12	<1		0.16
PKS-P-BEL-53	GRAB	BEL WP, Bldg #1, first aid room tap	28-May-10	0.05	<1		13	<1		0.17
PKS-P-BEL-53	GRAB	BEL WP, Bldg #1, first aid room tap	1-Jun-10	0.07	<1		12	<1		0.16
PKS-P-BEL-53	GRAB	BEL WP, Bldg #1, first aid room tap	8-Jun-10	0.06	<1		14	<1		0.2
PKS-P-BEL-53	GRAB	BEL WP, Bldg #1, first aid room tap	15-Jun-10	0.12	<1		17	<1		0.53
PKS-P-BEL-53	GRAB	BEL WP, Bldg #1, first aid room tap	22-Jun-10	1.2	<1		14	<1		0.12
PKS-P-BEL-53	GRAB	BEL WP, Bldg #1, first aid room tap	2-Jul-10	0.58	<1		14	<1		0.16
PKS-P-BEL-53	GRAB	BEL WP, Bldg #1, first aid room tap	6-Jul-10	0.43	<1		13	<1		0.16
PKS-P-BEL-53	GRAB	BEL WP, Bldg #1, first aid room tap	14-Jul-10	0.85	<1		16	<1		0.17
PKS-P-BEL-53	GRAB	BEL WP, Bldg #1, first aid room tap	19-Jul-10	0.64	<1		14	<1		0.12
PKS-P-BEL-53	GRAB	BEL WP, Bldg #1, first aid room tap	28-Jul-10	0.47	<1		14	<1		0.18
PKS-P-BEL-53	GRAB	BEL WP, Bldg #1, first aid room tap	4-Aug-10	0.58	<1		20	<1		0.3
PKS-P-BEL-53	GRAB	BEL WP, Bldg #1, first aid room tap	9-Aug-10	0.34	<1		19	<1		0.15
PKS-P-BEL-53	GRAB	BEL WP, Bldg #1, first aid room tap	18-Aug-10	0.26	<1		19	<1		0.13
PKS-P-BEL-53	GRAB	BEL WP, Bldg #1, first aid room tap	24-Aug-10	0.09	<1		14	<1		0.18
PKS-P-BEL-53	GRAB	BEL WP, Bldg #1, first aid room tap	30-Aug-10	0.2	<1		17	<1		0.15
PKS-P-BEL-53	GRAB	BEL WP, Bldg #1, first aid room tap	9-Sep-10	0.18	<1		18	<1		0.17
PKS-P-BEL-53	GRAB	BEL WP, Bldg #1, first aid room tap	14-Sep-10	0.06	<1		13	<1		0.22
PKS-P-BEL-53	GRAB	BEL WP, Bldg #1, first aid room tap	21-Sep-10	1.1	<1		18	<1		0.17
PKS-P-BEL-53	GRAB	BEL WP, Bldg #1, first aid room tap	28-Sep-10	1.5	<1		13	<1		0.21
PKS-P-BEL-53	GRAB	BEL WP, Bldg #1, first aid room tap	5-Oct-10	1.5	<1		14	<1		0.15
PKS-P-BEL-53	GRAB	BEL WP, Bldg #1, first aid room tap	12-Oct-10	1.8	<1		15	<1		0.17
PKS-P-BEL-53	GRAB	BEL WP, Bldg #1, first aid room tap	19-Oct-10	1.1	<1		13	<1		0.11
PKS-P-BEL-53	GRAB	BEL WP, Bldg #1, first aid room tap	26-Oct-10	1.6	<1		13	<1		0.16
PKS-P-BEL-53	GRAB	BEL WP, Bldg #1, first aid room tap	1-Nov-10	1.2	<1		14	<1		0.15
PKS-P-BEL-53	GRAB	BEL WP, Bldg #1, first aid room tap	9-Nov-10	0.75	<1		17	<1		0.15
PKS-P-BEL-53	GRAB	BEL WP, Bldg #1, first aid room tap	15-Nov-10	0.88	<1		12	<1		0.17
PKS-P-BEL-53	GRAB	BEL WP, Bldg #1, first aid room tap	22-Nov-10	0.95	<1		9.8	<1		0.11
PKS-P-BEL-53	GRAB	BEL WP, Bldg #1, first aid room tap	29-Nov-10	0.67	<1		6.1	<1		0.08
PKS-P-BEL-60	GRAB	BEL WP, bldg #2, gallery tap	20-Apr-10	0.07	<1		10	<1		0.13
PKS-P-BEL-60	GRAB	BEL WP, bldg #2, gallery tap	26-Apr-10	0.04	<1		17	<1		0.28
PKS-P-BEL-60	GRAB	BEL WP, bldg #2, gallery tap	28-May-10	0.03	<1		15	<1		0.15
PKS-P-BEL-60	GRAB	BEL WP, bldg #2, gallery tap	1-Jun-10	0.04	<1		13	<1		0.15
PKS-P-BEL-60	GRAB	BEL WP, bldg #2, gallery tap	8-Jun-10	0.06	<1		15	<1		0.18
PKS-P-BEL-60	GRAB	BEL WP, bldg #2, gallery tap	15-Jun-10	0.13	<1		18	<1		0.11
PKS-P-BEL-60	GRAB	BEL WP, bldg #2, gallery tap	22-Jun-10	1.2	<1		13	<1		0.2
PKS-P-BEL-60	GRAB	BEL WP, bldg #2, gallery tap	2-Jul-10	0.53	<1		14	<1		0.11
PKS-P-BEL-60	GRAB	BEL WP, bldg #2, gallery tap	6-Jul-10	0.43	<1		14	<1		0.18
PKS-P-BEL-60	GRAB	BEL WP, bldg #2, gallery tap	14-Jul-10	0.36	<1		14	<1		0.21
PKS-P-BEL-60	GRAB	BEL WP, bldg #2, gallery tap	19-Jul-10	0.33	<1		14	<1		0.13
PKS-P-BEL-60	GRAB	BEL WP, bldg #2, gallery tap	28-Jul-10	0.33	<1		14	<1		0.16
PKS-P-BEL-60	GRAB	BEL WP, bldg #2, gallery tap	4-Aug-10	0.48	<1		18	<1		0.22
PKS-P-BEL-60	GRAB	BEL WP, bldg #2, gallery tap	9-Aug-10	0.3	<1		19	<1		0.13
PKS-P-BEL-60	GRAB	BEL WP, bldg #2, gallery tap	18-Aug-10	0.21	<1		19	<1		0.13
PKS-P-BEL-60	GRAB	BEL WP, bldg #2, gallery tap	24-Aug-10	0.19	<1		14	<1		0.16
PKS-P-BEL-60	GRAB	BEL WP, bldg #2, gallery tap	30-Aug-10	0.2	<1		17	<1		0.16
PKS-P-BEL-60	GRAB	BEL WP, bldg #2, gallery tap	9-Sep-10	0.09	<1		16	<1		0.09
PKS-P-BEL-60	GRAB	BEL WP, bldg #2, gallery tap	14-Sep-10	0.05	<1		13	<1		0.23
PKS-P-BEL-60	GRAB	BEL WP, bldg #2, gallery tap	21-Sep-10	0.1	<1		17	<1		0.21
PKS-P-BEL-60	GRAB	BEL WP, bldg #2, gallery tap	28-Sep-10	0.53	<1		13	<1		0.16

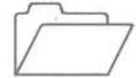
Sampling point	Sample type	Sample reported name	Sampled date	Chlorine Free mg/L	Ecoli MF/100 mLS	Ecoli MPN/100 mLS	Temp °C	Total Coliform MF/100mLS	Total Coliform MPN/100mLS	Turbidity NTU
PKS-P-BEL-60	GRAB	BEL WP, bldg #2, gallery tap	5-Oct-10	1.5	<1		15	<1		0.16
PKS-P-BEL-67	GRAB	BEL WP, CL shed, meter tap	5-Jan-10	0.28						
PKS-P-BEL-67	GRAB	BEL WP, CL shed, meter tap	13-Jan-10	0.3						
PKS-P-BEL-67	GRAB	BEL WP, CL shed, meter tap	20-Jan-10	0.26						
PKS-P-BEL-67	GRAB	BEL WP, CL shed, meter tap	27-Jan-10	0.32						
PKS-P-BEL-67	GRAB	BEL WP, CL shed, meter tap	2-Feb-10	0.29						
PKS-P-BEL-67	GRAB	BEL WP, CL shed, meter tap	9-Feb-10	0.26						
PKS-P-BEL-67	GRAB	BEL WP, CL shed, meter tap	16-Feb-10	0.22						
PKS-P-BEL-67	GRAB	BEL WP, CL shed, meter tap	24-Feb-10	0.14						
PKS-P-BEL-67	GRAB	BEL WP, CL shed, meter tap	2-Mar-10	0.17						
PKS-P-BEL-67	GRAB	BEL WP, CL shed, meter tap	9-Mar-10	0.27						
PKS-P-BEL-67	GRAB	BEL WP, CL shed, meter tap	17-Mar-10	0.17						
PKS-P-BEL-67	GRAB	BEL WP, CL shed, meter tap	23-Mar-10	0.13						
PKS-P-BEL-67	GRAB	BEL WP, CL shed, meter tap	30-Mar-10	0.12						
PKS-P-BEL-67	GRAB	BEL WP, CL shed, meter tap	9-Apr-10	0.13						
PKS-P-BEL-67	GRAB	BEL WP, CL shed, meter tap	13-Apr-10	0.08						
PKS-P-BEL-67	GRAB	BEL WP, CL shed, meter tap	20-Apr-10	0.06						
PKS-P-BEL-67	GRAB	BEL WP, CL shed, meter tap	26-Apr-10	<0.01						
PKS-P-BEL-67	GRAB	BEL WP, CL shed, meter tap	5-May-10	0.03						
PKS-P-BEL-67	GRAB	BEL WP, CL shed, meter tap	11-May-10	0.13						
PKS-P-BEL-67	GRAB	BEL WP, CL shed, meter tap	18-May-10	0.14						
PKS-P-BEL-67	GRAB	BEL WP, CL shed, meter tap	28-May-10	8						
PKS-P-BEL-67	GRAB	BEL WP, CL shed, meter tap	1-Jun-10	0.1						
PKS-P-BEL-67	GRAB	BEL WP, CL shed, meter tap	8-Jun-10	1						
PKS-P-BEL-67	GRAB	BEL WP, CL shed, meter tap	15-Jun-10	0.45						
PKS-P-BEL-67	GRAB	BEL WP, CL shed, meter tap	22-Jun-10	0.67						
PKS-P-BEL-67	GRAB	BEL WP, CL shed, meter tap	2-Jul-10	0.41						
PKS-P-BEL-67	GRAB	BEL WP, CL shed, meter tap	6-Jul-10	0.69						
PKS-P-BEL-67	GRAB	BEL WP, CL shed, meter tap	14-Jul-10	0.59						
PKS-P-BEL-67	GRAB	BEL WP, CL shed, meter tap	19-Jul-10	0.55						
PKS-P-BEL-67	GRAB	BEL WP, CL shed, meter tap	28-Jul-10	0.76						
PKS-P-BEL-67	GRAB	BEL WP, CL shed, meter tap	4-Aug-10	0.51						
PKS-P-BEL-67	GRAB	BEL WP, CL shed, meter tap	9-Aug-10	0.36						
PKS-P-BEL-67	GRAB	BEL WP, CL shed, meter tap	18-Aug-10	0.38						
PKS-P-BEL-67	GRAB	BEL WP, CL shed, meter tap	24-Aug-10	0.36						
PKS-P-BEL-67	GRAB	BEL WP, CL shed, meter tap	30-Aug-10	0.23						
PKS-P-BEL-67	GRAB	BEL WP, CL shed, meter tap	9-Sep-10	0.12						
PKS-P-BEL-67	GRAB	BEL WP, CL shed, meter tap	14-Sep-10	0.14						
PKS-P-BEL-67	GRAB	BEL WP, CL shed, meter tap	21-Sep-10	1.7						
PKS-P-BEL-67	GRAB	BEL WP, CL shed, meter tap	28-Sep-10	2						
PKS-P-BEL-67	GRAB	BEL WP, CL shed, meter tap	5-Oct-10	1.8						
PKS-P-BEL-67	GRAB	BEL WP, CL shed, meter tap	12-Oct-10	2						
PKS-P-BEL-67	GRAB	BEL WP, CL shed, meter tap	19-Oct-10	1.4						
PKS-P-BEL-67	GRAB	BEL WP, CL shed, meter tap	26-Oct-10	1.6						
PKS-P-BEL-67	GRAB	BEL WP, CL shed, meter tap	1-Nov-10	1.2						
PKS-P-BEL-67	GRAB	BEL WP, CL shed, meter tap	9-Nov-10	1.3						
PKS-P-BEL-67	GRAB	BEL WP, CL shed, meter tap	15-Nov-10	1.1						
PKS-P-BEL-67	GRAB	BEL WP, CL shed, meter tap	22-Nov-10	0.83						
PKS-P-BEL-67	GRAB	BEL WP, CL shed, meter tap	29-Nov-10	0.71						
PKS-P-BEL-67	GRAB	BEL WP, CL shed, meter tap	6-Dec-10	0.07						
PKS-P-BEL-67	GRAB	BEL WP, CL shed, meter tap	13-Dec-10	2.2						
PKS-P-BEL-67	GRAB	BEL WP, CL shed, meter tap	31-Dec-10	2.1						
PKS-P-BEL-71	GRAB	BEL WP, Maint. bldg., washroom tap	5-Jan-10	0.06	<1		7	<1		0.14
PKS-P-BEL-71	GRAB	BEL WP, Maint. bldg., washroom tap	13-Jan-10	0.1	<1		8	<1		0.13
PKS-P-BEL-71	GRAB	BEL WP, Maint. bldg., washroom tap	20-Jan-10	0.12	<1		6	<1		0.2
PKS-P-BEL-71	GRAB	BEL WP, Maint. bldg., washroom tap	27-Jan-10	0.12	<1		6.6	<1		0.11
PKS-P-BEL-71	GRAB	BEL WP, Maint. bldg., washroom tap	2-Feb-10	0.14	<1		8.1	<1		0.12
PKS-P-BEL-71	GRAB	BEL WP, Maint. bldg., washroom tap	9-Feb-10	0.2	<1		7.3	<1		0.17
PKS-P-BEL-71	GRAB	BEL WP, Maint. bldg., washroom tap	16-Feb-10	0.1	<1		8.1	<1		0.24
PKS-P-BEL-71	GRAB	BEL WP, Maint. bldg., washroom tap	24-Feb-10	0.05	<1		6	<1		0.09
PKS-P-BEL-71	GRAB	BEL WP, Maint. bldg., washroom tap	2-Mar-10	0.11	<1		7.2	<1		0.09
PKS-P-BEL-71	GRAB	BEL WP, Maint. bldg., washroom tap	9-Mar-10	0.12	<1		7.5	<1		0.16
PKS-P-BEL-71	GRAB	BEL WP, Maint. bldg., washroom tap	17-Mar-10	0.05	<1		7.6	<1		0.28
PKS-P-BEL-71	GRAB	BEL WP, Maint. bldg., washroom tap	23-Mar-10	0.17	<1		7.4	<1		0.24
PKS-P-BEL-71	GRAB	BEL WP, Maint. bldg., washroom tap	30-Mar-10	0.1	<1		7.9	<1		0.13
PKS-P-BEL-71	GRAB	BEL WP, Maint. bldg., washroom tap	9-Apr-10	0.15	<1		7.5	<1		0.08
PKS-P-BEL-71	GRAB	BEL WP, Maint. bldg., washroom tap	13-Apr-10	0.12	<1		7.9	<1		0.1
PKS-P-BEL-71	GRAB	BEL WP, Maint. bldg., washroom tap	20-Apr-10	0.03	<1		11	<1		0.23
PKS-P-BEL-71	GRAB	BEL WP, Maint. bldg., washroom tap	26-Apr-10	0.03	<1		10	<1		0.3
PKS-P-BEL-71	GRAB	BEL WP, Maint. bldg., washroom tap	5-May-10	0.02	<1		8.7	<1		0.14
PKS-P-BEL-71	GRAB	BEL WP, Maint. bldg., washroom tap	11-May-10	0.04	<1		9	<1		0.16
PKS-P-BEL-71	GRAB	BEL WP, Maint. bldg., washroom tap	18-May-10	0.08	<1		11	<1		0.14
PKS-P-BEL-71	GRAB	BEL WP, Maint. bldg., washroom tap	28-May-10	0.07	<1		11	<1		0.13
PKS-P-BEL-71	GRAB	BEL WP, Maint. bldg., washroom tap	1-Jun-10	0.06	<1		12	<1		0.1
PKS-P-BEL-71	GRAB	BEL WP, Maint. bldg., washroom tap	8-Jun-10	0.04	<1		12	<1		0.26

Sampling point	Sample type	Sample reported name	Sampled date	Chlorine Free mg/L	Ecoli MF/100 mLS	Ecoli MPN/100 mLS	Temp °C	Total Coliform MF/100mLS	Total Coliform MPN/100mLS	Turbidity NTU
PKS-P-BEL-71	GRAB	BEL WP, Maint. bldg., washroom tap	15-Jun-10	0.14	<1		14	<1		0.08
PKS-P-BEL-71	GRAB	BEL WP, Maint. bldg., washroom tap	22-Jun-10	0.31	<1		13	<1		0.18
PKS-P-BEL-71	GRAB	BEL WP, Maint. bldg., washroom tap	2-Jul-10	0.7	<1		12	<1		0.29
PKS-P-BEL-71	GRAB	BEL WP, Maint. bldg., washroom tap	6-Jul-10	0.48	<1		13	<1		0.14
PKS-P-BEL-71	GRAB	BEL WP, Maint. bldg., washroom tap	14-Jul-10	0.31	<1		17	<1		0.34
PKS-P-BEL-71	GRAB	BEL WP, Maint. bldg., washroom tap	19-Jul-10	0.53	<1		14	<1		0.21
PKS-P-BEL-71	GRAB	BEL WP, Maint. bldg., washroom tap	28-Jul-10	0.39	<1		12	<1		0.35
PKS-P-BEL-71	GRAB	BEL WP, Maint. bldg., washroom tap	4-Aug-10	0.34	<1		20	<1		0.17
PKS-P-BEL-71	GRAB	BEL WP, Maint. bldg., washroom tap	9-Aug-10	0.32	<1		18	<1		0.3
PKS-P-BEL-71	GRAB	BEL WP, Maint. bldg., washroom tap	18-Aug-10	0.37	<1		19	<1		0.15
PKS-P-BEL-71	GRAB	BEL WP, Maint. bldg., washroom tap	24-Aug-10	0.25	<1		18	<1		0.3
PKS-P-BEL-71	GRAB	BEL WP, Maint. bldg., washroom tap	30-Aug-10	0.11	<1		16	<1		0.24
PKS-P-BEL-71	GRAB	BEL WP, Maint. bldg., washroom tap	9-Sep-10	0.19	<1		18	<1		0.22
PKS-P-BEL-71	GRAB	BEL WP, Maint. bldg., washroom tap	14-Sep-10	0.07	<1		12	<1		0.16
PKS-P-BEL-71	GRAB	BEL WP, Maint. bldg., washroom tap	21-Sep-10	0.09	<1		15	<1		0.36
PKS-P-BEL-71	GRAB	BEL WP, Maint. bldg., washroom tap	28-Sep-10	0.87	<1		12	<1		0.17
PKS-P-BEL-71	GRAB	BEL WP, Maint. bldg., washroom tap	5-Oct-10	0.79	<1		14	<1		0.19
PKS-P-BEL-71	GRAB	BEL WP, Maint. bldg., washroom tap	12-Oct-10	1.7	<1		14	<1		0.26
PKS-P-BEL-71	GRAB	BEL WP, Maint. bldg., washroom tap	19-Oct-10	1.6	<1		13	<1		0.23
PKS-P-BEL-71	GRAB	BEL WP, Maint. bldg., washroom tap	26-Oct-10	1.6	<1		11	<1		0.24
PKS-P-BEL-71	GRAB	BEL WP, Maint. bldg., washroom tap	1-Nov-10	0.26	<1		11	<1		0.22
PKS-P-BEL-71	GRAB	BEL WP, Maint. bldg., washroom tap	9-Nov-10	1	<1		14	<1		0.53
PKS-P-BEL-71	GRAB	BEL WP, Maint. bldg., washroom tap	15-Nov-10	0.9	<1		9.4	<1		0.17
PKS-P-BEL-71	GRAB	BEL WP, Maint. bldg., washroom tap	22-Nov-10	0.9	<1		6	<1		0.24
PKS-P-BEL-71	GRAB	BEL WP, Maint. bldg., washroom tap	29-Nov-10	0.41	<1		5.4	<1		0.13
PKS-P-BEL-71	GRAB	BEL WP, Maint. bldg., washroom tap	6-Dec-10	0.07	<1		6.6	<1		0.16
PKS-P-BEL-71	GRAB	BEL WP, Maint. bldg., washroom tap	13-Dec-10	2.2	<1		6.8	<1		0.15
PKS-P-BEL-71	GRAB	BEL WP, Maint. bldg., washroom tap	20-Dec-10	2	<1		5.4	<1		0.21
PKS-P-BEL-71	GRAB	BEL WP, Maint. bldg., washroom tap	31-Dec-10	2	<1		6.2	<1		0.1
PKS-P-LYN-01	GRAB	LYN, picnic , hose bib	24-Feb-10		<1		5.7	<1		0.28
PKS-P-LYN-01	GRAB	LYN, picnic , hose bib	1-Mar-10		<1		6.7	<1		0.17
PKS-P-LYN-01	GRAB	LYN, picnic , hose bib	27-May-10	<0.01	<1		11	<1		0.18
PKS-P-LYN-01	GRAB	LYN, picnic , hose bib	23-Jun-10	<0.01	<1		12	<1		0.07
PKS-P-LYN-01	GRAB	LYN, picnic , hose bib	27-Jul-10	<0.01	<1		12	<1		0.1
PKS-P-LYN-01	GRAB	LYN, picnic , hose bib	4-Aug-10	<0.01	<1		14	<1		0.12
PKS-P-LYN-01	GRAB	LYN, picnic , hose bib	24-Aug-10	<0.01	<1		12	<1		0.22
PKS-P-LYN-01	GRAB	LYN, picnic , hose bib	8-Sep-10	<0.01	<1		12	<1		0.08
PKS-P-LYN-02	GRAB	LYN, picnic , BC Mills tap	3-Mar-10		<1		7.2	<1		0.09
PKS-P-LYN-02	GRAB	LYN, picnic , BC Mills tap	5-Mar-10		<1		7.6	<1		0.1
PKS-P-LYN-02	GRAB	LYN, picnic , BC Mills tap	8-Mar-10		<1		7.6	<1		0.11
PKS-P-LYN-02	GRAB	LYN, picnic , BC Mills tap	15-Mar-10		<1		8.5	<1		0.14
PKS-P-LYN-02	GRAB	LYN, picnic , BC Mills tap	19-Mar-10		<1		7.5	<1		0.09
PKS-P-LYN-02	GRAB	LYN, picnic , BC Mills tap	25-Mar-10		<1		8.5	<1		0.11
PKS-P-LYN-02	GRAB	LYN, picnic , BC Mills tap	26-Mar-10		<1		8.5	<1		0.07
PKS-P-LYN-02	GRAB	LYN, picnic , BC Mills tap	29-Mar-10		<1		7.8	<1		0.09
PKS-P-LYN-02	GRAB	LYN, picnic , BC Mills tap	6-Apr-10	<0.01	<1		8.5	<1		0.13
PKS-P-LYN-02	GRAB	LYN, picnic , BC Mills tap	8-Apr-10		<1		8.1	<1		0.1
PKS-P-LYN-02	GRAB	LYN, picnic , BC Mills tap	12-Apr-10	<0.01	<1		8	<1		0.08
PKS-P-LYN-02	GRAB	LYN, picnic , BC Mills tap	16-Apr-10	<0.01	<1		8.7	<1		0.1
PKS-P-LYN-02	GRAB	LYN, picnic , BC Mills tap	22-Apr-10	<0.01	<1		8.7	<1		0.1
PKS-P-LYN-02	GRAB	LYN, picnic , BC Mills tap	30-Apr-10	<0.01	<1		8.8	<1		0.1
PKS-P-LYN-02	GRAB	LYN, picnic , BC Mills tap	5-May-10	<0.01	<1		9	<1		0.11
PKS-P-LYN-02	GRAB	LYN, picnic , BC Mills tap	11-May-10	<0.01	<1		[Not taken] LA	<1		0.09
PKS-P-LYN-02	GRAB	LYN, picnic , BC Mills tap	13-May-10		<1		9.1	<1		0.19
PKS-P-LYN-02	GRAB	LYN, picnic , BC Mills tap	14-May-10		<1		9.3	<1		0.11
PKS-P-LYN-02	GRAB	LYN, picnic , BC Mills tap	18-May-10		<1		10	<1		0.15
PKS-P-LYN-02	GRAB	LYN, picnic , BC Mills tap	21-May-10	<0.01	<1		9.3	<1		0.09
PKS-P-LYN-02	GRAB	LYN, picnic , BC Mills tap	27-May-10	<0.01	<1		9.8	<1		0.13
PKS-P-LYN-02	GRAB	LYN, picnic , BC Mills tap	3-Jun-10	<0.01	<1		12	<1		0.1
PKS-P-LYN-02	GRAB	LYN, picnic , BC Mills tap	10-Jun-10		<1		10	<1		0.09
PKS-P-LYN-02	GRAB	LYN, picnic , BC Mills tap	16-Jun-10	<0.01	<1		11	<1		0.09
PKS-P-LYN-02	GRAB	LYN, picnic , BC Mills tap	23-Jun-10	<0.01	<1		11	<1		0.09
PKS-P-LYN-02	GRAB	LYN, picnic , BC Mills tap	29-Jun-10	<0.01	<1		11	<1		0.09
PKS-P-LYN-02	GRAB	LYN, picnic , BC Mills tap	6-Jul-10	<0.01	<1		12	<1		0.11
PKS-P-LYN-02	GRAB	LYN, picnic , BC Mills tap	9-Jul-10	<0.01	<1		12	<1		0.14
PKS-P-LYN-02	GRAB	LYN, picnic , BC Mills tap	13-Jul-10	<0.01	<1		11	<1		0.11
PKS-P-LYN-02	GRAB	LYN, picnic , BC Mills tap	15-Jul-10	<0.01	<1		12	<1		0.09
PKS-P-LYN-02	GRAB	LYN, picnic , BC Mills tap	23-Jul-10	<0.01	<1		11	<1		0.09
PKS-P-LYN-02	GRAB	LYN, picnic , BC Mills tap	27-Jul-10	<0.01	<1		10	<1		0.07
PKS-P-LYN-02	GRAB	LYN, picnic , BC Mills tap	30-Jul-10	<0.01	<1		9.9	<1		0.06
PKS-P-LYN-02	GRAB	LYN, picnic , BC Mills tap	4-Aug-10	<0.01	<1		13	<1		0.12
PKS-P-LYN-02	GRAB	LYN, picnic , BC Mills tap	12-Aug-10	<0.01	<1		14	<1		0.08
PKS-P-LYN-02	GRAB	LYN, picnic , BC Mills tap	17-Aug-10	<0.01	<1		11	<1		0.09

Sampling point	Sample type	Sample reported name	Sampled date	Chlorine Free mg/L	Ecoli MF/100 mLs	Ecoli MPN/100 mLs	Temp °C	Total Coliform MF/100mLs	Total Coliform MPN/100mLs	Turbidity NTU
PKS-P-LYN-02	GRAB	LYN, picnic, BC Mills tap	24-Aug-10	<0.01	<1		10	<1		0.1
PKS-P-LYN-02	GRAB	LYN, picnic, BC Mills tap	2-Sep-10	<0.01	<1		12	<1		0.08
PKS-P-LYN-02	GRAB	LYN, picnic, BC Mills tap	8-Sep-10	<0.01	<1		12	<1		0.1
PKS-P-LYN-02	GRAB	LYN, picnic, BC Mills tap	14-Sep-10	<0.01	<1		12	<1		0.1
PKS-P-LYN-02	GRAB	LYN, picnic, BC Mills tap	23-Sep-10		<1		11	<1		0.07
PKS-P-LYN-02	GRAB	LYN, picnic, BC Mills tap	28-Sep-10	<0.01	<1		11	<1		0.12
PKS-P-LYN-02	GRAB	LYN, picnic, BC Mills tap	6-Oct-10	<0.01	<1		11	<1		0.09
PKS-P-LYN-02	GRAB	LYN, picnic, BC Mills tap	12-Oct-10	<0.01	<1		9.9	<1		0.1
PKS-P-LYN-02	GRAB	LYN, picnic, BC Mills tap	20-Oct-10	<0.01	<1		9.7	<1		0.12
PKS-P-LYN-02	GRAB	LYN, picnic, BC Mills tap	26-Oct-10	<0.01	<1		10	<1		0.12
PKS-P-LYN-02	GRAB	LYN, picnic, BC Mills tap	2-Nov-10	<0.01	<1		9.6	<1		0.1
PKS-P-LYN-02	GRAB	LYN, picnic, BC Mills tap	9-Nov-10	<0.01	<1		9.3	<1		0.12
PKS-P-LYN-02	GRAB	LYN, picnic, BC Mills tap	18-Nov-10	<0.01	<1		8.9	<1		0.12
PKS-P-LYN-02	GRAB	LYN, picnic, BC Mills tap	23-Nov-10	<0.01	<1		8.3	<1		0.1
PKS-P-LYN-02	GRAB	LYN, picnic, BC Mills tap	30-Nov-10	<0.01	<1		7.8	<1		0.11
PKS-P-LYN-02	GRAB	LYN, picnic, BC Mills tap	8-Dec-10	<0.01	<1		8.1	<1		0.08
PKS-P-LYN-02	GRAB	LYN, picnic, BC Mills tap	14-Dec-10	<0.01	<1		6.5	<1		0.12
PKS-P-ALD-04	GRAB	ALD Pot, CL. shed, RAW well head tap	4-Jan-10			<1	7		<1	0.1
PKS-P-ALD-04	GRAB	ALD Pot, CL. shed, RAW well head tap	14-Jan-10			<1	9.5		<1	0.13
PKS-P-ALD-04	GRAB	ALD Pot, CL. shed, RAW well head tap	21-Jan-10			<1	9		<1	0.12
PKS-P-ALD-04	GRAB	ALD Pot, CL. shed, RAW well head tap	28-Jan-10			<1	13		<1	0.43
PKS-P-ALD-04	GRAB	ALD Pot, CL. shed, RAW well head tap	1-Feb-10			<1	14		<1	0.07
PKS-P-ALD-04	GRAB	ALD Pot, CL. shed, RAW well head tap	10-Feb-10			<1	13		1	0.58
PKS-P-ALD-04	GRAB	ALD Pot, CL. shed, RAW well head tap	15-Feb-10			<1	14		3	0.45
PKS-P-ALD-04	GRAB	ALD Pot, CL. shed, RAW well head tap	23-Feb-10	<0.01		<1	13		<1	0.11
PKS-P-ALD-04	GRAB	ALD Pot, CL. shed, RAW well head tap	1-Mar-10	0.04		<1	10		<1	0.11
PKS-P-ALD-04	GRAB	ALD Pot, CL. shed, RAW well head tap	10-Mar-10			<1	15		<1	0.17
PKS-P-ALD-04	GRAB	ALD Pot, CL. shed, RAW well head tap	11-Mar-10			<1	14		<1	0.12
PKS-P-ALD-04	GRAB	ALD Pot, CL. shed, RAW well head tap	12-Mar-10			<1	11		<1	0.09
PKS-P-ALD-04	GRAB	ALD Pot, CL. shed, RAW well head tap	16-Mar-10			<1	11		<1	0.08
PKS-P-ALD-04	GRAB	ALD Pot, CL. shed, RAW well head tap	22-Mar-10			<1	14		<1	0.06
PKS-P-ALD-04	GRAB	ALD Pot, CL. shed, RAW well head tap	29-Mar-10			<1	13		<1	0.09
PKS-P-ALD-04	GRAB	ALD Pot, CL. shed, RAW well head tap	7-Apr-10			<1	14		<1	0.11
PKS-P-ALD-04	GRAB	ALD Pot, CL. shed, RAW well head tap	14-Apr-10			<1	12		<1	0.08
PKS-P-ALD-04	GRAB	ALD Pot, CL. shed, RAW well head tap	20-Apr-10			<1	14		2	0.75
PKS-P-ALD-04	GRAB	ALD Pot, CL. shed, RAW well head tap	27-Apr-10			<1	13		<1	0.13
PKS-P-ALD-04	GRAB	ALD Pot, CL. shed, RAW well head tap	4-May-10			<1	14		<1	0.11
PKS-P-ALD-04	GRAB	ALD Pot, CL. shed, RAW well head tap	12-May-10			<1	14		<1	0.1
PKS-P-ALD-04	GRAB	ALD Pot, CL. shed, RAW well head tap	18-May-10			<1	13		<1	0.12
PKS-P-ALD-04	GRAB	ALD Pot, CL. shed, RAW well head tap	27-May-10			<1	10		<1	0.13
PKS-P-ALD-04	GRAB	ALD Pot, CL. shed, RAW well head tap	2-Jun-10			<1	12		<1	0.1
PKS-P-ALD-04	GRAB	ALD Pot, CL. shed, RAW well head tap	8-Jun-10			<1	12		<1	0.12
PKS-P-ALD-04	GRAB	ALD Pot, CL. shed, RAW well head tap	15-Jun-10			<1	12		<1	0.19
PKS-P-ALD-04	GRAB	ALD Pot, CL. shed, RAW well head tap	22-Jun-10			<1	13		<1	0.11
PKS-P-ALD-04	GRAB	ALD Pot, CL. shed, RAW well head tap	28-Jun-10			<1	13		<1	0.09
PKS-P-ALD-04	GRAB	ALD Pot, CL. shed, RAW well head tap	6-Jul-10			<1	14		<1	0.14
PKS-P-ALD-04	GRAB	ALD Pot, CL. shed, RAW well head tap	13-Jul-10			<1	11		<1	0.19
PKS-P-ALD-04	GRAB	ALD Pot, CL. shed, RAW well head tap	19-Jul-10			<1	13		<1	0.07
PKS-P-ALD-04	GRAB	ALD Pot, CL. shed, RAW well head tap	28-Jul-10			<1	13		<1	0.27
PKS-P-ALD-04	GRAB	ALD Pot, CL. shed, RAW well head tap	4-Aug-10			<1	14		<1	0.09
PKS-P-ALD-04	GRAB	ALD Pot, CL. shed, RAW well head tap	10-Aug-10			<1	10		<1	0.14
PKS-P-ALD-04	GRAB	ALD Pot, CL. shed, RAW well head tap	18-Aug-10			<1	14		<1	0.12
PKS-P-ALD-04	GRAB	ALD Pot, CL. shed, RAW well head tap	24-Aug-10			<1	10		<1	0.09
PKS-P-ALD-04	GRAB	ALD Pot, CL. shed, RAW well head tap	30-Aug-10			<1	10		1	0.11
PKS-P-ALD-04	GRAB	ALD Pot, CL. shed, RAW well head tap	9-Sep-10			<1	16		<1	0.08
PKS-P-ALD-04	GRAB	ALD Pot, CL. shed, RAW well head tap	14-Sep-10			<1	13		<1	0.09
PKS-P-ALD-04	GRAB	ALD Pot, CL. shed, RAW well head tap	21-Sep-10			<1	12		<1	0.1
PKS-P-ALD-04	GRAB	ALD Pot, CL. shed, RAW well head tap	28-Sep-10			<1	9.9		<1	0.06
PKS-P-ALD-04	GRAB	ALD Pot, CL. shed, RAW well head tap	5-Oct-10			<1	16		<1	0.15
PKS-P-ALD-04	GRAB	ALD Pot, CL. shed, RAW well head tap	12-Oct-10			<1	15		<1	0.1
PKS-P-ALD-04	GRAB	ALD Pot, CL. shed, RAW well head tap	19-Oct-10			<1	14		<1	0.09
PKS-P-ALD-04	GRAB	ALD Pot, CL. shed, RAW well head tap	26-Oct-10			<1	10		<1	0.07
PKS-P-ALD-04	GRAB	ALD Pot, CL. shed, RAW well head tap	3-Nov-10			<1	10		<1	0.08
PKS-P-ALD-04	GRAB	ALD Pot, CL. shed, RAW well head tap	9-Nov-10			<1	18		<1	0.09
PKS-P-ALD-04	GRAB	ALD Pot, CL. shed, RAW well head tap	16-Nov-10			<1	12		<1	0.12
PKS-P-ALD-04	GRAB	ALD Pot, CL. shed, RAW well head tap	22-Nov-10			<1	9		<1	0.07
PKS-P-ALD-04	GRAB	ALD Pot, CL. shed, RAW well head tap	30-Nov-10			<1	9.1		<1	0.15
PKS-P-ALD-04	GRAB	ALD Pot, CL. shed, RAW well head tap	6-Dec-10			<1	9		<1	0.13
PKS-P-ALD-04	GRAB	ALD Pot, CL. shed, RAW well head tap	14-Dec-10			<1	9.1		<1	0.12
PKS-P-ALD-04	GRAB	ALD Pot, CL. shed, RAW well head tap	20-Dec-10			<1	9.5		<1	3.2
PKS-P-ALD-04	GRAB	ALD Pot, CL. shed, RAW well head tap	31-Dec-10			<1	5.5		<1	0.7
PKS-P-BEL-66	GRAB	BEL WP, CL shed, RAW tap on 100mm	5-Jan-10	0.22		<1	7.3		<1	0.25
PKS-P-BEL-66	GRAB	BEL WP, CL shed, RAW tap on 100mm	13-Jan-10			<1	8.2		4	0.26
PKS-P-BEL-66	GRAB	BEL WP, CL shed, RAW tap on 100mm	20-Jan-10			<1	9		<1	0.07
PKS-P-BEL-66	GRAB	BEL WP, CL shed, RAW tap on 100mm	27-Jan-10			<1	9.3		<1	0.1

Sampling point	Sample type	Sample reported name	Sampled date	Chlorine Free mg/L	Ecoli MF/100 mLS	Ecoli MPN/100 mLS	Temp °C	Total Coliform MF/100mLS	Total Coliform MPN/100mLS	Turbidity NTU
PKS-P-BEL-66	GRAB	BEL WP, CL shed, RAW tap on 100mm	2-Feb-10			<1	7.9		<1	0.12
PKS-P-BEL-66	GRAB	BEL WP, CL shed, RAW tap on 100mm	9-Feb-10			<1	8.4		2	0.11
PKS-P-BEL-66	GRAB	BEL WP, CL shed, RAW tap on 100mm	16-Feb-10			<1	8.1		<1	0.13
PKS-P-BEL-66	GRAB	BEL WP, CL shed, RAW tap on 100mm	24-Feb-10			<1	9.6		<1	0.1
PKS-P-BEL-66	GRAB	BEL WP, CL shed, RAW tap on 100mm	4-Mar-10			<1	8.1		1	0.09
PKS-P-BEL-66	GRAB	BEL WP, CL shed, RAW tap on 100mm	9-Mar-10			<1	9.5		2	0.09
PKS-P-BEL-66	GRAB	BEL WP, CL shed, RAW tap on 100mm	17-Mar-10			<1	8.1		1	0.14
PKS-P-BEL-66	GRAB	BEL WP, CL shed, RAW tap on 100mm	23-Mar-10			<1	8.2		<1	0.08
PKS-P-BEL-66	GRAB	BEL WP, CL shed, RAW tap on 100mm	30-Mar-10			<1	8.5		<1	0.07
PKS-P-BEL-66	GRAB	BEL WP, CL shed, RAW tap on 100mm	9-Apr-10			<1	8.4		<1	0.08
PKS-P-BEL-66	GRAB	BEL WP, CL shed, RAW tap on 100mm	13-Apr-10			<1	8.5		<1	0.07
PKS-P-BEL-66	GRAB	BEL WP, CL shed, RAW tap on 100mm	20-Apr-10			<1	9.7		<1	0.08
PKS-P-BEL-66	GRAB	BEL WP, CL shed, RAW tap on 100mm	26-Apr-10			<1	10		<1	0.13
PKS-P-BEL-66	GRAB	BEL WP, CL shed, RAW tap on 100mm	5-May-10			<1	10		2	0.07
PKS-P-BEL-66	GRAB	BEL WP, CL shed, RAW tap on 100mm	11-May-10			<1	10		<1	0.1
PKS-P-BEL-66	GRAB	BEL WP, CL shed, RAW tap on 100mm	18-May-10			<1	9.6		<1	0.16
PKS-P-BEL-66	GRAB	BEL WP, CL shed, RAW tap on 100mm	28-May-10			<1	12		1	0.1
PKS-P-BEL-66	GRAB	BEL WP, CL shed, RAW tap on 100mm	1-Jun-10			<1	12		1	0.09
PKS-P-BEL-66	GRAB	BEL WP, CL shed, RAW tap on 100mm	8-Jun-10			<1	11		2	0.15
PKS-P-BEL-66	GRAB	BEL WP, CL shed, RAW tap on 100mm	15-Jun-10			<1	14		3	0.08
PKS-P-BEL-66	GRAB	BEL WP, CL shed, RAW tap on 100mm	22-Jun-10			<1	13		3	0.09
PKS-P-BEL-66	GRAB	BEL WP, CL shed, RAW tap on 100mm	2-Jul-10			<1	13		3	0.09
PKS-P-BEL-66	GRAB	BEL WP, CL shed, RAW tap on 100mm	6-Jul-10			<1	13		2	0.15
PKS-P-BEL-66	GRAB	BEL WP, CL shed, RAW tap on 100mm	14-Jul-10			<1	15		20	0.1
PKS-P-BEL-66	GRAB	BEL WP, CL shed, RAW tap on 100mm	19-Jul-10			<1	15		<1	0.09
PKS-P-BEL-66	GRAB	BEL WP, CL shed, RAW tap on 100mm	28-Jul-10			<1	15		9	0.11
PKS-P-BEL-66	GRAB	BEL WP, CL shed, RAW tap on 100mm	4-Aug-10			<1	15		48	0.06
PKS-P-BEL-66	GRAB	BEL WP, CL shed, RAW tap on 100mm	9-Aug-10			<1	17		140	0.09
PKS-P-BEL-66	GRAB	BEL WP, CL shed, RAW tap on 100mm	18-Aug-10			1	17		28	0.09
PKS-P-BEL-66	GRAB	BEL WP, CL shed, RAW tap on 100mm	24-Aug-10			<1	16		85	0.11
PKS-P-BEL-66	GRAB	BEL WP, CL shed, RAW tap on 100mm	30-Aug-10			1	15		45	0.09
PKS-P-BEL-66	GRAB	BEL WP, CL shed, RAW tap on 100mm	9-Sep-10			<1	16		19	0.08
PKS-P-BEL-66	GRAB	BEL WP, CL shed, RAW tap on 100mm	14-Sep-10			<1	15		16	0.13
PKS-P-BEL-66	GRAB	BEL WP, CL shed, RAW tap on 100mm	21-Sep-10			<1	14		8	0.16
PKS-P-BEL-66	GRAB	BEL WP, CL shed, RAW tap on 100mm	28-Sep-10			<1	13		65	0.07
PKS-P-BEL-66	GRAB	BEL WP, CL shed, RAW tap on 100mm	5-Oct-10			<1	13		9	0.15
PKS-P-BEL-66	GRAB	BEL WP, CL shed, RAW tap on 100mm	12-Oct-10			<1	14		10	0.09
PKS-P-BEL-66	GRAB	BEL WP, CL shed, RAW tap on 100mm	19-Oct-10			<1	12		<1	0.14
PKS-P-BEL-66	GRAB	BEL WP, CL shed, RAW tap on 100mm	26-Oct-10			<1	12		<1	0.09
PKS-P-BEL-66	GRAB	BEL WP, CL shed, RAW tap on 100mm	1-Nov-10			<1	11		7	0.08
PKS-P-BEL-66	GRAB	BEL WP, CL shed, RAW tap on 100mm	9-Nov-10			<1	14		8	0.15
PKS-P-BEL-66	GRAB	BEL WP, CL shed, RAW tap on 100mm	15-Nov-10			<1	10		4	0.08
PKS-P-BEL-66	GRAB	BEL WP, CL shed, RAW tap on 100mm	22-Nov-10			<1	8.1		3	0.12
PKS-P-BEL-66	GRAB	BEL WP, CL shed, RAW tap on 100mm	29-Nov-10			<1	6		<1	0.09
PKS-P-BEL-66	GRAB	BEL WP, CL shed, RAW tap on 100mm	6-Dec-10			<1	6		<1	0.08
PKS-P-BEL-66	GRAB	BEL WP, CL shed, RAW tap on 100mm	13-Dec-10			<1	6		<1	0.07
PKS-P-BEL-66	GRAB	BEL WP, CL shed, RAW tap on 100mm	31-Dec-10			<1	5.8		<1	0.08

APPENDIX C – HEALTHLINK BC – DRINKING WATER AND THOSE WITH WEAKENED IMMUNE SYSTEMS



Drinking Water and Those with Weakened Immune Systems

Some people with very weak immune systems may be at higher risk of water-borne infections. This file provides information about how to help prevent water-borne infections.

People who have significantly weakened immune systems and who are at higher risk of certain water-borne diseases include:

- People with HIV infection who have a CD4+ count of < 100 cells/mm³.
- People with hematological malignancies (lymphoma or leukemia) who are being actively treated or have been in remission and off treatment for less than 1 year.
- Hematopoietic stem cell transplant recipients.
- People born with diseases that severely affect their immune systems.

Some people with weakened immune systems, such as those with certain types of cancers or taking certain medications, may not be at higher risk of severe water-borne diseases. These people do not need to take extra precautions with their drinking water.

Ask your doctor or specialist how weak your immune system is, and whether you need to take extra precautions.

Diseases from drinking water

Drinking water can contain different organisms, including bacteria, viruses and parasites, which can cause disease. These organisms can exist in the source water such as lake water and survive through treatment, or they can enter the water supply in the distribution system. Well water can be contaminated if the well is not built properly or if it draws on water from the surface of the

ground, such as shallow wells or wells drilled in fractured rock. Surface water, such as rivers, lakes and streams, can also contain disease-causing organisms from animal feces.

If you have a weak immune system, you should not drink water from surface sources or wells potentially contaminated by surface water (for example, dug wells), unless the water has been treated to remove or inactivate at least 99.9% of parasites (protozoa), 99.99% of viruses and 100% of harmful bacteria.

Most community water systems in B.C. have effective treatment, such as disinfection or chlorination, against bacteria and viruses. However, in many cases, treatment may not provide a 99.9% reduction in infectious parasites. Furthermore, some water systems and many private supplies have no treatment at all. If the water you drink has not been disinfected, please refer to HealthLink BC File #49b [How to Disinfect Drinking Water](#).

To further treat drinking water that has been disinfected, consider the methods listed below.

Options for water treatment

Boiling: If your water supply is disinfected you need only bring the water to a full boil to inactivate any *Cryptosporidium* parasites - a major concern for immunocompromised people, as there is no medical treatment for this parasite.

If the water is not yet disinfected, it's recommended you bring water to a full boil for at least one minute as the best way to kill or inactivate bacteria, viruses and parasites.

At elevations over 2,000 meters [6,500 feet], you should boil water for at least two minutes to disinfect it. In this situation, you should not drink or use tap water to brush your teeth, rinse your mouth, mix drinks or make ice cubes without boiling it first.

If you are preparing infant formula, please see HealthLink BC File [#69b Formula Feeding Your Baby: Safely Preparing and Storing Formula](#). Please note that boiling water will get rid of viruses, bacteria and parasites but not chemicals which may be found in the water. For more information, please contact the environmental health officer or drinking water officer at your nearest public health unit.

Filters: If you plan to install a drinking water filter in your home, you will need a system labeled as "Absolute" 1 micron or smaller, and labeled as meeting ANSI/NSF International Standard #53 for removal of parasites. These are *not* suitable for removing bacteria and viruses and should *not* be used *unless* the water supply is at least disinfected first.

Jug-type filters, which sit in a jug and allow water to trickle through, and some tap-mounted and built-in devices are not an appropriate solution. The jug filter models are *not* effective in removing many disease-causing organisms.

Reverse Osmosis (RO): RO is effective against all disease-causing organisms and many chemical contaminants. Unless it has a high capacity, it will only produce small amounts of water and waste a large volume. Speak to a water treatment specialist to see if this is the best option for you.

Ultraviolet (UV) Treatment: UV light will kill many disease-causing organisms, and it is effective against almost all parasites. UV will not kill some bacterial spores and some viruses, so it should *not* be used *unless* the water supply is at least disinfected. UV

treatment units should meet NSF Standard #55A.

Bottled water

If you do not want to drink water from the tap, you may also choose to buy bottled water that has been treated adequately. Most bottled water in B.C. has had RO treatment, but not all has been treated. You should check with the water bottler to find out what treatment it has had. You can still use tap water for cooking as long as you boil it. You can use bottled water treated by reverse osmosis for drinking, brushing teeth, making ice cubes and for recipes where water is used but not boiled such as cold soups or salad dressings.

For more information, including the level of treatment in your local water system, please contact your drinking water purveyor or supplier or the local environmental health officer or drinking water officer. Please also see the following HealthLink BC Files.

[#49a Water-borne Diseases in BC](#)

[#49b How to Disinfect Drinking Water](#)



BC Centre for Disease Control
AN AGENCY OF THE PROVINCIAL HEALTH SERVICES AUTHORITY

For more HealthLink BC File topics, visit www.HealthLinkBC.ca/healthfiles/index.stm or your local public health unit.

Click on www.HealthLinkBC.ca or call 8-1-1 for non-emergency health information and services in B.C.

For deaf and hearing-impaired assistance, call 7-1-1 in B.C.

Translation services are available in more than 130 languages on request.

APPENDIX D – FRASER HEALTH – HEALTH INFORMATION ON ARSENIC

Health Information on Arsenic

Arsenic in drinking water can have serious short and long-term health effects.

Acute Health Effects

The symptoms of acute arsenic poisoning are stomach pain, vomiting, diarrhea, muscle pain and weakness, and flushing of the skin. These effects are typically seen at arsenic concentrations above 1200-micrograms/L. However in children with high fluid intake acute poisoning has been seen with concentrations in the range of 200-micrograms/L.

Chronic Health Effects

Long-term exposure to lower concentrations of arsenic can produce a number of chronic adverse health effects. The skin can become thickened, heavily pigmented, or develop multiple wart-like lesions. Blood vessels in the extremities can be damaged, affecting the blood supply to the feet and hands. Chronic exposure to arsenic can also be a cause of high blood pressure.

However of most concern is the fact that arsenic is a known cause of cancer. Chronic exposure to arsenic in the drinking water (over the course of a lifetime) can lead to several types of skin cancer, and cancers of the lung, liver and bladder.

It is the ability to cause cancer that is the critical health effect used in deciding the standards for arsenic in drinking water.

What are the Current Drinking Water Standards?

The Guidelines for Canadian Drinking Water Quality published by Health Canada set a Maximum Acceptable Concentration (MAC) of 0.010 mg/L (10 micrograms/L).

This MAC is based on the ability of municipal treatment facilities and residential water treatment devices to reduce arsenic concentrations to 0.010 mg/L or less. It is set at a level that is higher than would be associated with an "essentially negligible" risk of lung, bladder and liver cancers (1 new case per 100,000 people).

At 0.005 mg/L the estimated lifetime additional risk of these cancers is 2 – 20 cases per 100,000 people exposed. These are cancer cases over and above the cases due to other causes that would occur in the population anyway.

At 0.010 mg/L the additional risk of these internal organ cancers is 3 – 39 cases per 100,000 people exposed.

It is only at concentrations of arsenic of 0.0003 mg/L or less that the risk could be considered "essentially negligible".

The risks associated with consumption of water containing arsenic are the same for everyone. Groups such as children and pregnant women are not at any greater risk of developing health problems from exposure to arsenic than the general population.

Conclusions

1. Arsenic is a human carcinogen, which means that exposure to any level in drinking water may increase the risk of cancer.
2. At low concentrations of arsenic the increased risk of lung, bladder, liver and skin cancer is small when compared to the number of cases that occur in populations that are not exposed to arsenic.
3. Lowering the concentration of arsenic in your drinking water will lower your lifetime risk of developing lung, bladder, liver and skin cancer.
4. However at low arsenic concentrations the treatment costs may be large for a small reduction in risk.